



# Plainsboro Reporter

A Quarterly Township Newsletter

Fall 2007

## Plainsboro Steps Up Efforts to Comply with Stormwater Regulations

As fall approaches, residents should be reminded of the rules and procedures for leaf and brush pickup. The New Jersey Clean Water Act requires Plainsboro to insure these procedures are being followed. "It is critically important that residents comply with these procedures", stated Township Administrator Bob Sheehan. "Significant fines can be imposed on Plainsboro by the state. Our efforts to educate the public have not been as successful as hoped. Unfortunately increased enforcement on the Township's part will be necessary."

Township Ordinances require residents to place their leaves at the edge of the roadway and the curblin, no more than seven (7) days prior to their scheduled collection, for pickup by Township crews. Leaf piles should not be placed in the street or block sidewalks and cannot be placed within ten (10) feet of a storm drain inlet.

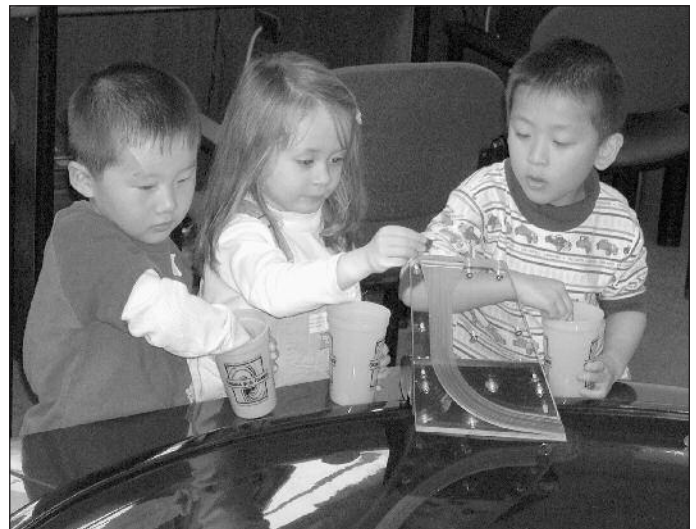
Residents are not allowed to mix any other type of debris in their leaf piles. Leaf piles mixed with branches, rocks, dirt, mulch, grass clippings, etc. are considered contaminated and will not be collected by Township crews. Residents not complying with these guidelines are subject to penalties and will be required to remove the leaf piles at their own expense.

Brush is defined as trimmings from trees, shrubs and vines. Please leave branches as long as possible, but do not exceed six (6) feet in length. Not accepted with brush collections are roots, stumps, grass, thatch, mulch, soil, sand and landscape construction materials and debris.

Brush is collected on an alternate-month schedule from March - October and must be placed at the edge of the

roadway and curblin no later than the first Monday of your scheduled collection month. Sweeping, raking, blowing or otherwise placing brush that is not containerized at the curblin or along the street is only allowed seven (7) days prior to a scheduled collection and cannot be placed closer than ten (10) feet from any storm drain inlet. Residents in violation of these requirements are also subject to penalties and will be required to remove the brush at their expense.

For a schedule of pickup dates by neighborhood, please see page 7 of this newsletter.



*"Change for Change" is one of the fundraising projects that has helped the fundraising campaign for the new library raise a total of \$1.4 million. Students from Harmony School place their contribution into the vortex on display at the Plainsboro Public Library. Harmony School's project netted \$162,54!*

## FYI...

**Tax Bill Reminder** – The Tax Collector’s Office is setting up an e-mail reminder program. If you like paying your bills online, our email reminder will start that process. Just go to the Township’s website ([www.plainsboronj.com](http://www.plainsboronj.com)), select the link provided on our homepage and follow the instructions. It’s safe, secure and worry free!

**Home Energy Assistance** – There are several programs available to assist low income households with the high cost of heating your home. Call the New Jersey Energy Choice toll free hotline at 1-877-NJ5-5678 or visit [www.njenergychoice.com](http://www.njenergychoice.com) for further information.

**Fuel Tank Assistance** – The State of New Jersey is now offering up to \$3,000 to assist eligible applicants with the cost of upgrading underground fuel oil storage tanks; for further information go to [www.new-tanksnj.org](http://www.new-tanksnj.org).

## Volunteer Spotlight on: Susan (Tianxiao) Yue



Susan Yue has participated as a volunteer with the Plainsboro Recreation Department since 2006. In her role as a Shadow Buddy, Susan generously provides friendship and assistance to children who participate in programs such as *Kids’ Co’Motion*, *Artful Artists* and *Young Athlete*.

Susan is an accomplished artist and has shared her talents with special needs children by assisting the Recreation Office with the planning and implementation of two *Art in Nature* events in conjunction with her high school’s National Art Honor Society (NAHS). As president of the NAHS, Susan exhibits strong leadership skills and initiative, developing the art projects, soliciting volunteer support from the NAHS, and assisting with activities at the event. Entering her senior year at WWP High School South, Susan’s other school activities include serving as operations editor of the school literary magazine, and treasurer of the varsity fencing team. Her community service work includes teaching English as a Second Language to Chinese senior citizens, as well as volunteering with the Princeton Senior Resource Center, the Trenton Area Soup Kitchen, SAVE animal shelter, Amnesty International, and the American Red Cross.

“It is thanks to volunteers that we have been able to expand our programs and services to the community. Through their involvement, volunteers enhance and elevate our community”, stated Township Committeeperson Ginger Gold Schnitzer.



*Mrs. Savitbri Ramanathan and her children Vani and Barath admire the butterfly artwork recently displayed at the Plainsboro municipal center. The Ramanathans participated in an Art in Nature event where the butterfly artwork was created. Art in Nature is a seasonal program for youths with special needs and their families presented by the Plainsboro Recreation Department and funded in part by the New Jersey Department of Community Affairs’ Recreation for Individuals with Disabilities grant.*

# Keeping you posted...

## Hospital Relocation

Recently, the Plainsboro Township Committee passed a resolution authorizing and requesting the Township Planning Board to investigate the proposed site for the Medical Center at Princeton constitutes as an “area in need of redevelopment”. This is the initial step in a process that may lead to the designation of the site as a redevelopment area. Such a designation would alter the planning process for the proposed hospital relocation.

Should the Planning Board review yield a recommendation that a redevelopment designation is appropriate, the Township Committee would then formally vote to designate the site as “in need of redevelopment”. Upon designation the Township Committee would then ask the Planning Board to prepare a redevelopment plan. It is this planning process that would pro-

vide the framework for the planning and public review of the proposal. The redevelopment approach will not reduce the public’s opportunity to participate in the planning process.

“The redevelopment process may hold some advantages to Plainsboro”, stated Mayor Peter Cantu. “It could provide us greater flexibility in protecting the Plainsboro taxpayers from a fiscal impact point of view. Likewise, our responsibility to meet the affordable housing obligations that this project drives may be better addressed through a redevelopment process.” One of the key elements of the redevelopment process is the Township’s ability to negotiate a developer’s agreement that can include financial benefits of payments in lieu of taxes.

## Village Area

Progress continues on development and occupancy in the Village Area. Sharbell Development has submitted plans to proceed with three more buildings contained in the Village Center plan. These will be three-story buildings containing 15,000 sq. ft. each, and will include commercial and office uses, as well as eight apartments.

In addition to new buildings, occupancy of existing village center buildings is progressing as well. The month of June saw the opening of second floor offices for Dr. B. Bang, MD and the Independent Association of Publishers’. Three new food establishments, Cold Stone Creamery, East Asian Fusion and Restaurant and Positano Mediterranean Grill also opened. This summer and autumn, more food and office tenants are expected to open for business, including: C Sea Spa, A&G Fine Foods, F.I.S.H. Foundation, Susan T. White Kitchen & Bath Studio, JW Tumbles Childrens’ Gym, Windsor Family Medical, and Sugar and Sunshine Bakery. “As new tenants occupy space, it’s clear that there’s a growing sense of excitement and energy about our new Village Center,” stated

Committeeman Ed Yates.

In addition, other activities in the village area include continued progress on the Cranbury Brook project by Toll Brothers. Nearly three-quarters of the 102 single family age-restricted homes are either completed or under construction; around 60 of which are already occupied. Likewise, the 93 unit condo building is well underway; 30 of the units are now occupied with the balance of the units either at or near completion.

One of the great amenities for new residents at the Cranbury Brook project is the recently completed recreational Clubhouse building located at the east end of Middlesex Boulevard. The new Clubhouse, which is nearly 7,000 sq. ft., contains activity rooms, including large and small meeting rooms, a room with billiard tables, his and her card playing rooms, an arts and crafts room, a fitness room, and a library. Outside the clubhouse are bocce courts and a swimming pool with a deck area, including sun sheltered seating areas.

## Forrestal Village

Revitalization efforts continue at the Forrestal Village. Can Do Fitness, which is now open, offers state of the art equipment, yoga temple, aquatics center, pilates studio, sport training, martial arts, certified staff, café, fitness apparel, and a full service Starbucks. Koi Spa International, which opened this summer, will offer a menu of beauty treatments, massage offerings, hair/nail salon, beauty and bath products, and a private reflecting spa.

Also, soon to open is Tre Piani’s new wine bar, Tre Bar, which will offer an upscale lunch and evening menu that will feature a Tapas-Style selection of Mediterranean small plates

and the area’s finest wine experience. Two new shops will be opening soon; Exquisite Bride and the Silver Shop. “Its quality new tenants like these,” says Committeeman Ed Yates, “that are just the thing that the Forrestal Village needs to become a self sustaining, vibrant commercial center.”

Continuing the tradition of fine restaurants at the Forrestal Village, a Ruth’s Chris Steak House is planned for the corner of College Road West and Village Boulevard. The new restaurant will feature a full-service bar and restaurant, including seating for 340 in addition to outdoor patio seating. A summer 2008 opening is planned.

# Safeguard Your Identity

**I**dentify theft occurs when someone uses your personal information (such as your name, social security number, or credit card number) without your permission to commit fraud or other crimes. Approximately 9 million Americans have their identity stolen each year. Identity thieves may rent an apartment, obtain a credit card, or establish a telephone account in your name. You may not find out about the theft until you review your credit report or a credit card statement and notice charges you didn't make. Identity Theft can adversely affect your credit making it difficult for you to obtain credit cards or loans. Identity thieves use a variety of methods to obtain your personal information such as:

**Dumpster Diving:** Rummaging through trash looking for bills or other personal documents with key information.

**Skimming:** Stealing credit/debit card numbers by using a special storage device when processing your card.

**Phishing:** Pretending to be financial institutions and sending spam or e-mail messages to get you to reveal your personal information.

**Changing Your Address:** Divert your billing statements to another location by completing a change of address form.

**Theft:** Stealing wallets and purses; mail, including bank and credit card statements; pre-approved credit offers; and new checks or tax information.

**Pretexting:** Using false pretenses to obtain your personal information from financial institutions, telephone companies, and other sources.

Once identity thieves have your personal information, they use it in a variety of ways.

**Credit card fraud:** They may open new credit card accounts in your name or change the billing address on your credit card so that you no longer receive bills, then run up charges on your account.

**Phone or utilities fraud:** They may open a new phone or wireless account in your name, or run up charges on your existing account. They may also use your name to get utility services like electricity, heating, or cable TV.

**Bank/finance fraud:** They may create counterfeit checks using your name or account number, or open a bank account in your name, clone your ATM card, or they may simply take out a loan in your name.

**Government documents fraud:** They may get a driver's license or official ID card issued in your name, using their picture. They may use your name and social securi-

ty number to get government benefits, or they may give your personal information to police during an arrest.

While nothing can guarantee that you won't become a victim of identity theft, you can minimize your risk, and minimize the damage if a problem develops, by making it more difficult for identity thieves to access your personal information.

## Protect your Social Security number

Don't carry your social security card in your wallet or write your social security number on a check. Give your social security number only when absolutely necessary, and ask to use other types of identifiers. Do the same if your health insurance company uses your social security number as your policy number.

## Treat your trash and mail carefully

To thwart an identity thief who may pick through your trash or recycling bins, always shred your charge receipts, copies of credit applications, insurance forms, physician statements, checks and bank statements and credit offers you get in the mail.

To opt out of receiving prescreened offers of credit in the mail, call: 1-888-5-OPT-OUT (1-888-567-8688).

Deposit your outgoing mail containing personally identifying information in post office collection boxes or at your local post office, rather than in an unsecured mail-

## Shred It! Mobile

Plainsboro Township, in conjunction with Middlesex County, is sponsoring a Shred It! event. Residents can safely dispose of documents with personal information. The documents are fed into a shredder as you watch.

**When:** November 3, 2007 (Bulk Waste Day) 9:00 am - 1:00 pm  
(or until the Shredder is filled)

**Where:** Conservation Center  
(Off Grovers Mill Road)

**What to Bring:** Old files, receipts, bills, financial statements, any document that you have not recycled due to a confidentiality concern.

**What Not to Bring:** Books, Magazines & Newspapers

box. Promptly remove mail from your mailbox. If you're planning to be away from home and can't pick up your mail, contact the U.S. Postal Service at 1-800-275-8777 or online at [www.usps.gov](http://www.usps.gov), to request a vacation hold. The Postal Service will hold your mail at your local post office until you can pick it up or are home to receive it.

### **Be on guard when using the Internet**

It can leave you vulnerable to online scammers, identity thieves and more. For practical tips to help you be on guard against Internet fraud, secure your computer, and protect your personal information, visit [www.OnGuardOnline.gov](http://www.OnGuardOnline.gov).

### **Select intricate passwords**

Avoid using easily available information like your mother's maiden name or your birth date when selecting a password. Combinations of letters, numbers, and special characters make the strongest passwords.

### **Verify a source before sharing information**

Don't give out personal information on the phone, through the mail, or on the Internet unless you've initiated the contact and are sure you know who you're dealing with.

### **Safeguard your personal information**

Protect your purse and wallet at all times. Carry only the identification information and the credit and debit cards that you'll actually need when you go out. Keep your personal information in a secure place at home, especially if you have roommates, employ outside help, or are having work done in your house.

### **If your identity is stolen...**

File a police report, check your credit reports, notify creditors, and dispute any unauthorized transactions immediately to restore your good name.

A police report that provides specific details of the identity theft is considered an Identity Theft Report, which entitles you to certain legal rights when it is provided to the three major credit reporting agencies or to companies where the thief misused your information. An Identity Theft Report can be used to permanently block fraudulent information that results from identity theft, such as accounts or addresses, from appearing on your credit report. It will also insure that debts do not reappear on your credit reports, will prevent a company from continuing to collect debts that result from identity theft and is needed to place an extended fraud alert on your credit report.

Identity theft is a serious crime which is occurring more and more each day. It is important to be careful with personal information and to take the proper steps to minimize your chances of becoming a victim.

## **Schools Open Drive Safely**

**M**otorists are reminded that as the beginning of a new school year approaches, so does the importance of being more cognizant of safety in and around school zones and school buses. The new school year brings with it an increase in pedestrian, school and vehicular traffic in general.

It is imperative that motorists be mindful of reduction in speed limits as they approach school zones. Also, motorists should be mindful of laws pertaining to school buses that are stopped with their emergency lights illuminated for letting on and off of students at designated stops. The law in New Jersey Title 39:4-128.1 specifically, states:

“On highways roadways not divided by safety islands or physical traffic separation installations, the driver of a vehicle approaching or overtaking a bus, which is being used solely for the transportation of children to or from school or a summer day camp or any school connected activity and which has stopped for the purpose of receiving or discharging any child, shall stop such vehicle not less than 25 feet from such school bus and keep such vehicle stationary until such child has entered said bus or has alighted and reached the side of such highway and until a flashing red light is no longer exhibited by the bus.”

“The Plainsboro Township Police Department is committed to the safety of all motorists, especially children that are in route to and from school”, stated Deputy Mayor Neil Lewis.



*Mayor Peter Cantu and Committee Person Ginger Gold Schnitzer join Town Center Elementary School parents and students in observance of “Walk Your Child to School Day” last October.*

## Funding Partnership Help Advance Needed Improvements

As essential transportation projects advance, funding partnerships established by the Township are easing the financial impact on Township taxpayers. Intersection improvements at Dey Road/Edgemere Avenue/Plainsboro Road are well on their way with completion expected in September. This key safety improvement which will provide a traffic signal, sidewalks and a modest road realignment is benefiting from \$400,000 of funding through the New Jersey Department of Transportation's Local Aid Program. This represents approximately 44% of the \$900,000 construction cost.

Once this improvement is complete the Township's efforts will move up Dey Road to the Scudders Mill Road intersection. There a significant intersection improvement will begin this fall. The project will include reconstructing the existing roadway, the installation of a new traffic signal, curbing, sidewalks, storm drain improvements and landscaping. The Township has entered into a funding agreement with Middlesex County in which the county will provide 75% of the funding for the project's construction costs, engineering design services and construction phase services.

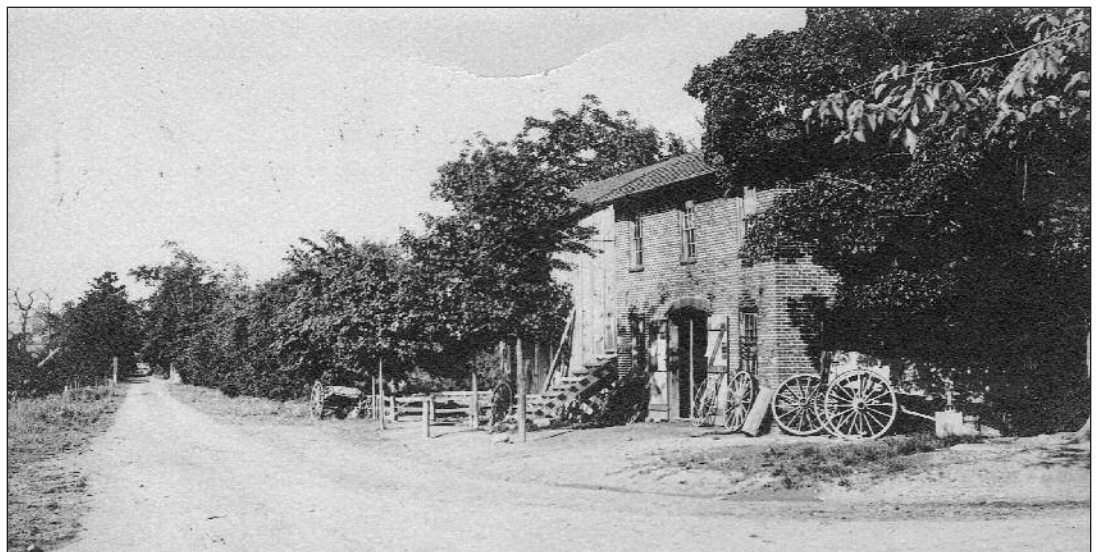
Also nearing completion is Phase I of the Plainsboro Road Bikeway. Delayed for months by PSEG's utility relocations, the project is expected to be completed this summer. Phase II of this project, which will extend the bikeway across Maple Avenue to Prospect Avenue, is currently being planned. Phase I received \$490,000 of funding support from the New Jersey Department of Transportation. Phase II has already received grant funding of \$80,000 from Middlesex County for this project and the Township has applied again to the county for additional funding and has applied to the New Jersey Department of Transportation for a trust fund grant. The construction of Phase II is currently on hold pending word from the county and state on our funding requests. Phase II improvements are estimated to cost \$368,000.

Plainsboro Road Traffic Calming Phase II Project is also advancing. The traffic calming project is the continuation of efforts to improve safety along Plainsboro Road.

It entails reconstructing the existing roadway, the construction of new curbing, medians, storm drains and landscaping. The project runs from the Plainsboro Road "P" Loop to the approach of the Deer Creek/Hunters Glen intersection. Construction is expected to commence in the spring of 2008. This project has essentially been fully funded through a generous grant from the United States Department of Transportation, which was sponsored by Congressman Rush Holt, totaling \$700,000. The project has also received support from New Jersey Department of Transportation's Local Aid Program totaling \$440,000.

The Township will also be making improvements to Plainsboro Road directly in front of Township Municipal Building. This project entails replacing deteriorated sections of the roadway and roadway base, construction of new curbs and sidewalks adjacent to the north side of Plainsboro Road from the Plainsboro/Dey/Edgemere intersection to the sidewalk adjacent to Township Municipal Building and the milling and paving of Plainsboro Road from the aforementioned intersection to Enterprise Drive. Currently, \$260,000 or 40% of the project cost is financed through local aid grants with an additional grant application pending.

In total, Plainsboro's transportation improvements program benefits from approximately \$2,370,000 in outside funding assistance. "These critical funding partnerships allow the Township to address important transportation needs while minimizing the impact on the taxpayer" stated Township Committeeman Michael Weaver. It is a significant help in our efforts to balance needed improvements with our longstanding efforts to minimize tax increases."



*This is the intersection of Route One and Plainsboro Road as it appeared 100 years ago! Learn fun and interesting facts about the people and places that helped to shape our community on the historic trolley tour scheduled for Sunday, October 21st (see the Parks & Recreation insert for more details).*

# At your service . . .

## Township Clerk's Office 799-0909 ext. 547

### Elections

Close of voter registration for the General Election is October 16th. The 2007 General Election will be held on November 6th.

**The 2008 Presidential Primary Election will be held on February 5th. Close of voter registration for this election is January 15, 2008.**

The Election hours for voting are 6:00 a.m. to 8:00 p.m.

### Passports

The passport office is open Tuesday, Wednesday, and Thursday 9:00 a.m.–noon.

For further information, see the township website or call 799-0909 ext. 200.

### Pet Licenses

NJ State Law mandates all dogs six months and older to be licensed annually by the township. Licenses are due for renewal by January 31st with penalty charges beginning on February 1st. Applications for dog and cat licenses are available from the Township Clerk's Office and the township website. Proof of rabies vaccination is required and vaccination immunity MUST extend through at least 10 months of the 12 month licensing period. Licenses

cannot be issued if the vaccination expires before November 1st of each year. If there is a medical reason as to why the animal cannot be vaccinated at the required time, a letter from the veterinarian must be submitted with the renewal form.

### Vital Records

Vital records such as birth, marriage/civil union and death certificates are issued through the Township Clerk's Office. For information regarding requirements call the office or visit the township website.

## Public Works Department 799-0099

### Autumn Recycling Center Hours

Monday and Thursday –  
5:30pm - 7:30pm  
Saturday - 10:00am - 5:00pm

### Curbside Brush Collection Schedule

**Section 1:** April, June, August and October

**Section 2:** March, May, July and September

### Leaf Collection Schedule

**Section 1:** Nov. 5 - Nov. 16 ;  
Dec. 3 - Dec. 14

**Section 2:** Oct. 22 - Nov. 2;  
Nov. 19 - Nov. 30

Due to holidays, leaf collection activities are suspended on November 12, 22 & 23.

### Brush and Leaf Collection Pickup

#### Section 1:

Princeton Collection, Beechtree, Princeton Manor, Princeton Crossing, Perrine Road, Serina Drive, Shallow Brook Estates, Brentwood Drive, Mapleton Road, George Davison Road, Woodland Drive

#### Section 2:

Gentry, Village Area, Dey Road, Plainsboro Road, Grovers Mill Road, Cranbury Neck Road, Eiker Road, Petty Road, Scotts Corner Road, Grovers Mill Estates, Brookside Court, Walker Gordon Estates

### Curbside Recycling

#### Autumn Schedule—

September 17; October 1, 15, 29 and November 12, 26

#### Next Bulk Waste Day –

November 3

**Township  
Clerk's Office**

**799-0909 ext. 547**

**Public Works  
799-0099**

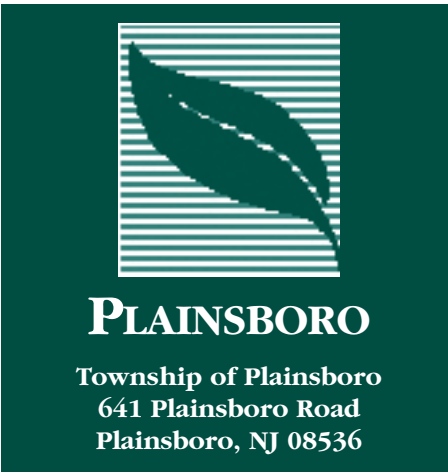
## Middlesex County Programs

The following services are provided by the county.  
For information, contact Middlesex County Solid Waste 732-745-4170 for information.

- Residential Paint Drop-Off
- Household Hazardous Waste Drop-Off
- Consumer Electronics Drop-Off

# Directory and Information

<p style="text-align: center;"><b>PLAINSBORO TOWNSHIP MUNICIPAL OFFICES</b></p> <p><i>Location:</i> 641 Plainsboro Road <i>Hours of Operation:</i> Monday-Friday 8:30am-4:30pm <i>Phone:</i> General 609-799-0909 Court 609-799-0863 <i>Web Site:</i> www.plainsboronj.com</p> <p><b>Plainsboro Public Works Department</b> <i>Location:</i> Scotts Corner Road at 20 Woodland Drive <i>Phone:</i> 609-799-0099</p> <p><b>Plainsboro Police Department</b> <i>Location:</i> 641 Plainsboro Road <i>Phone:</i> Non-Emergency 609-799-2333 <b>Emergencies 9 1 1</b> <i>Police</i> <i>Web Site:</i> www.plainsboropolice.com</p> <p><b>Plainsboro Public Library</b> <i>Location:</i> 641 Plainsboro Road <i>Phone:</i> 609-275-2897</p> <p><b>24-Hour Recorded Message Lines</b> Meeting Agenda 799-0909 x 5 (Township Committee, Planning Board) Park Rangers 897-7844 Passports 799-0909 x 200 Recreation Programs 799-0909 x 332 Traffic Updates 799-0909 x 900</p>	<p style="text-align: center;"><b>TOWNSHIP MEETINGS</b></p> <p>All meetings are held at 7:30pm in the Municipal Building, 641 Plainsboro Road, unless otherwise noted.</p> <p><b>Development Review</b> 3rd Tuesday, 6pm <b>Environmental Advisory Comm.</b> 4th Monday <b>Fire Commissioners</b> 3rd Monday, 7pm, Firehouse <b>Historical Society</b> 3rd Tuesday, Wicoff House <b>Human Relations Council</b> 2nd Monday <b>Library Board of Trustees</b> 1st Tuesday, Library <b>Local Assistance Board</b> Qtrly. Call x218 for date <b>Shade Tree Advisory</b> 2nd Tuesday, Public Works <b>Township Committee</b> Regular Mtg. 2nd Wednesday Agenda Mtg. 4th Wednesday <b>Planning Board</b> 1st &amp; 3rd Monday <b>Zoning Board</b> 1st Wednesday</p>	<p style="text-align: center;"><b>SCHEDULES TO NOTE</b></p> <p><b>Library Hours</b> Monday &amp; Friday 9:00am – 5:30pm Tuesday, Wed., Thursday 9:00am – 8:30pm Saturday &amp; Sunday 10:00am – 5:00pm</p> <p><b>Passport Office</b> Information: 799-0909 x 200 <i>Also check the website</i></p> <p><b>Recycling/Bulk Waste</b> <i>See Public Works Page</i></p> <p><b>More Numbers:</b></p> <p>School District Information 716-5000 Report Street Light Out to PSE&amp;G 1-800-436-7734 Report Potholes to Public Works 799-0099</p>
--	---	---



Presorted Standard  
US Postage  
**PAID**  
Plainsboro, NJ  
Permit #45

**TOWNSHIP COMMITTEE**

- Peter A. Cantu, Mayor
- Neil J. Lewis, Deputy Mayor
- Ginger Gold Schnitzer
- Michael T. Weaver
- Edmund C. Yates

**TOWNSHIP ADMINISTRATOR**

Robert O. Sheehan

**NEWSLETTER COORDINATOR**

Teresa Carson

**ECRWSS  
POSTAL CUSTOMER  
PLAINSBORO, NJ 08536**