

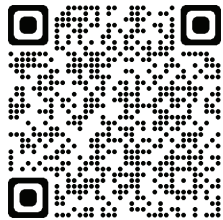
# Plainsboro Master Plan Update

A town's Master Plan is similar to a corporate business plan. It documents specific actions and desired outcomes in a thoughtful and pragmatic way over a period of time. A municipality in the state of New Jersey is obligated to update its Master Plan every ten years. While Plainsboro Township has updated sections of its Master Plan over the years, a comprehensive update hasn't occurred since 2009. Over the next several months the first two foundational chapters of the Master Plan will be updated. These chapters are the Statement of Objectives, Policies, Assumptions, Procedures and Standards, and the Land Use Element. All future growth in the Township has to be consistent with the Master Plan.

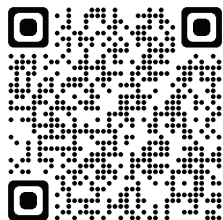
## Why is this important to me?

Change is inevitable, but you can have a say in what change looks like in your Township. If you have a vision for Plainsboro's future, now is the time to weigh in.

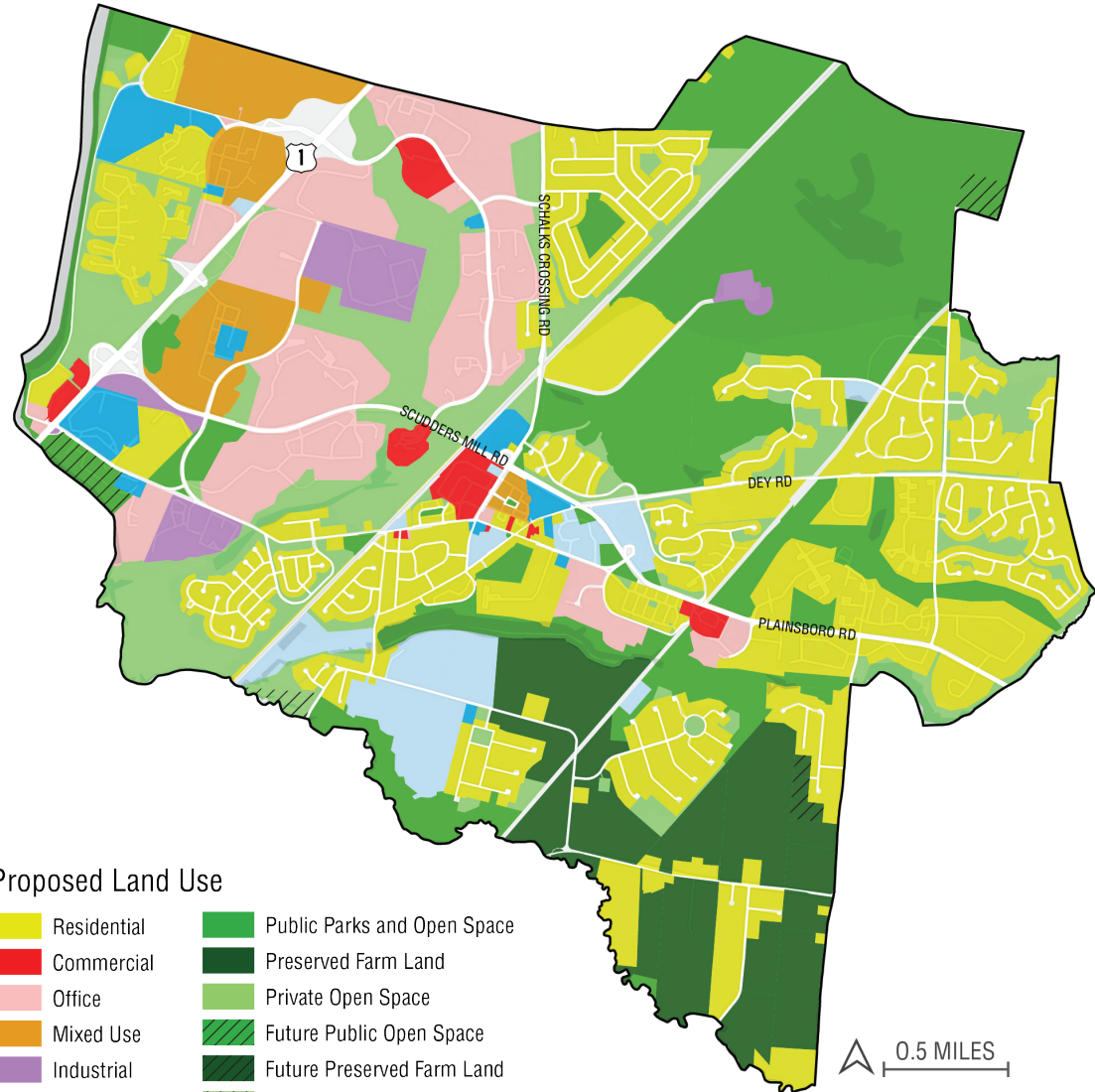
PLACE PHONE CAMERA OVER QR CODE  
TO TAKE THE SURVEY ONLINE!



PLACE PHONE CAMERA OVER QR CODE  
TO LEARN MORE ABOUT MASTER PLANNING



## Land Use Map



### Proposed Land Use

Residential	Public Parks and Open Space
Commercial	Preserved Farm Land
Office	Private Open Space
Mixed Use	Future Public Open Space
Industrial	Future Preserved Farm Land
Institutional	Future Private Open Space
Public Facilities	