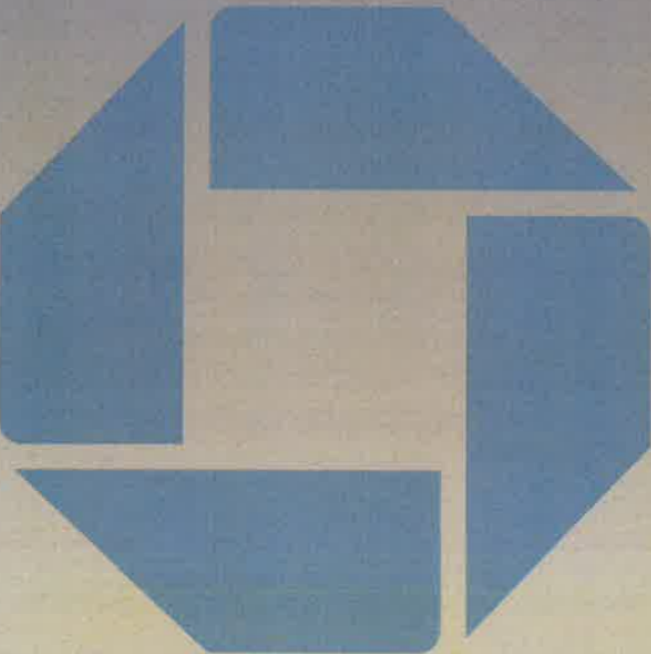


CHS.NB.1284

PLAINSBORO

Schalks Crossing Road &  
Scudders Mill Road  
Plainsboro, NJ 08536



REVISION NOTES:		
03.03.23	FP	Revised Aerial Plan, Added E01 & E06 Additional Approval & Notes
03.15.23	FP	Updated Aerial Plan, Site Plan, & Elevations, Added E16 & E17
04.14.23	FP	Updated Site Plan
08.29.23	JM	Updated Elevations.
11.14.23	FP	Revised E01-E04, E06-E10, & E16; Added E18-E21

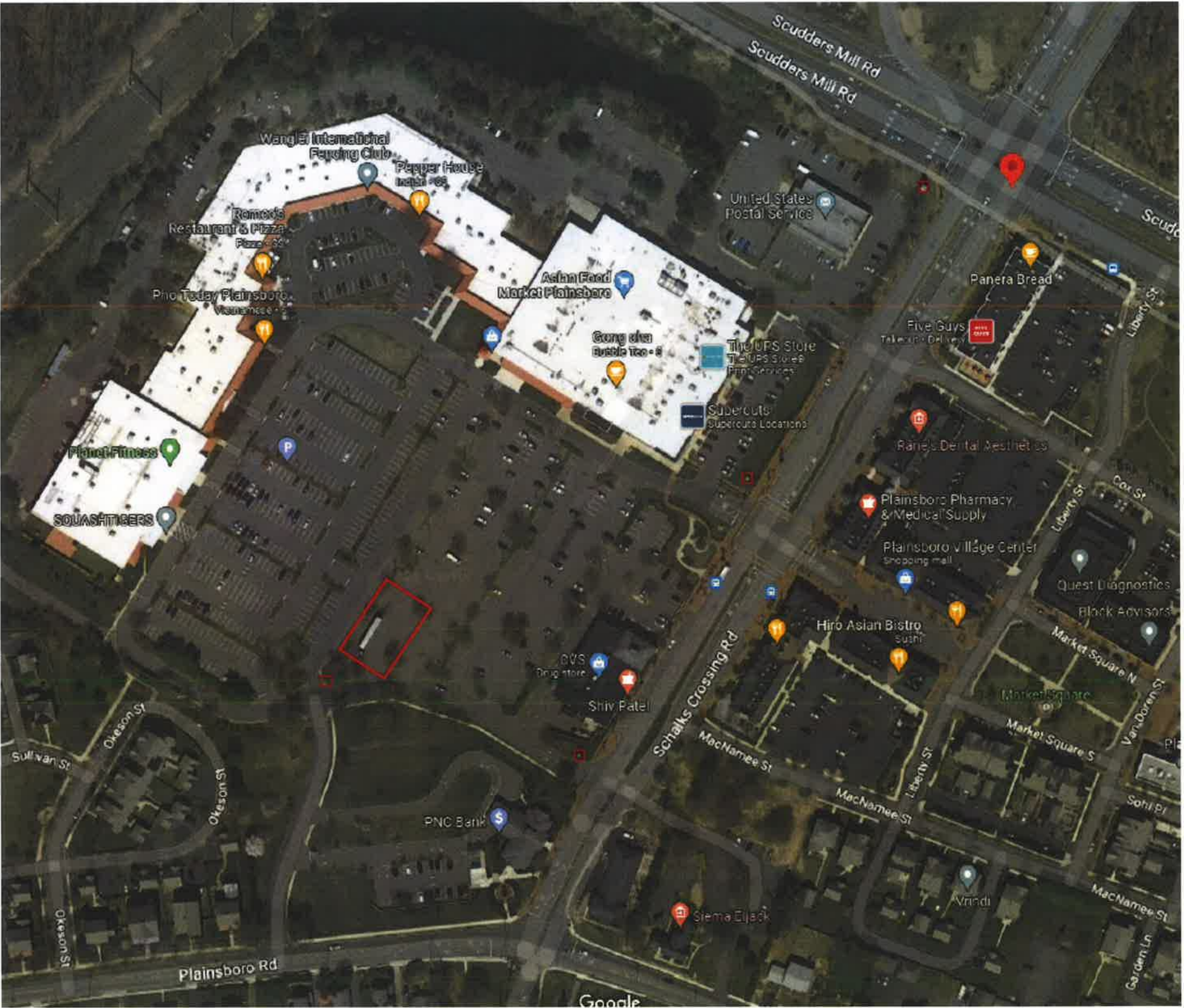


B104562





Aerial Plan



**CHS.NB.1284 - Plainsboro**  
Schalks Crossing Rd & Scudders Mill Rd  
Plainsboro, NJ 08536

**DESIGNER** - FP  
**CREATED** - 02.23.23  
**DRAWING** - B104562

 **PHILADELPHIASIGN**  
BRINGING THE WORLD'S BRANDS TO LIFE  
707 WEST SPRING GARDEN ST • PALMYRA, NJ • 08065  
P: 856-829-1460 • F: 856-829-8549 • WEB: <http://www.philadelphiasign.com>

THIS IS AN ORIGINAL UNPUBLISHED DRAWING CREATED BY P.S.C.O. IT IS SUBMITTED FOR YOUR PERSONAL USE IN CONJUNCTION WITH A PROJECT BEING PLANNED FOR YOU BY P.S.C.O. IT IS NOT TO BE SHOWN TO ANYONE OUTSIDE YOUR ORGANIZATION NOR IS IT TO BE USED, COPIED, REPRODUCED, OR EXHIBITED IN ANY FASHION.



E02	LIH-WBO-24-LED	WHITE W/ BLUE OCTAGON HALO-LIT CHANNEL LETTERS	36.9SF
E02.1	CHS.PP_RW_24LTR	RACEWAY FOR 24" LETTERSET INSTALLED BEHIND THE PARAPET	
E03	LIH-WBO-24-LED	WHITE W/ BLUE OCTAGON HALO-LIT CHANNEL LETTERS	36.9SF
E04	LIH-WBO-24-LED	WHITE W/ BLUE OCTAGON HALO-LIT CHANNEL LETTERS	36.9SF
E05	SUR-TTW-U-4-TP	ILLUMINATED THIN PROFILE ATM SURROUND	33SF
E06	CUST.REFACE	VINYL REFACE OF METAL DIRECTIONAL PANEL	0.6SF
E07	TC-P-ADA-V-NJ-CUST	POLE MOUNTED ADA PARKING REGULATORY SIGN W/ VAN ACCESS	3SF
E08	TC-P-ADA-NJ-CUST	POLE MOUNTED ADA PARKING REGULATORY SIGN	2.5SF
E09	DOT SIGN-CUST	DOUBLE-FACED DO NOT ENTER / STOP DOT SIGN - POLE MNTD	6.3SF
E10	DOT SIGN-CUST	DOUBLE-FACED DO NOT ENTER / STOP DOT SIGN - POLE MNTD	6.3SF
E12	CSS-FS	"COMING SOON" POST & PANEL SIGN	32SF
E13	CSS-FS	"COMING SOON" FENCE MOUNTED SIGN	60SF
E14	CSS-FS	"COMING SOON" FENCE MOUNTED SIGN	60SF
E15	CSS-FS	"COMING SOON" FENCE MOUNTED SIGN	60SF
E18	TC-P-K-CUST	CUSTOM POLE-MOUNTED REGULATORY SIGN	1.5SF
E19	TC-P-K-CUST	CUSTOM POLE-MOUNTED REGULATORY SIGN	1.5SF
E20	TC-P-J-CUST	CUSTOM POLE-MOUNTED REGULATORY SIGN	1.5SF
E21	TC-P-J-CUST	CUSTOM POLE-MOUNTED REGULATORY SIGN	1.5SF





Site Plan

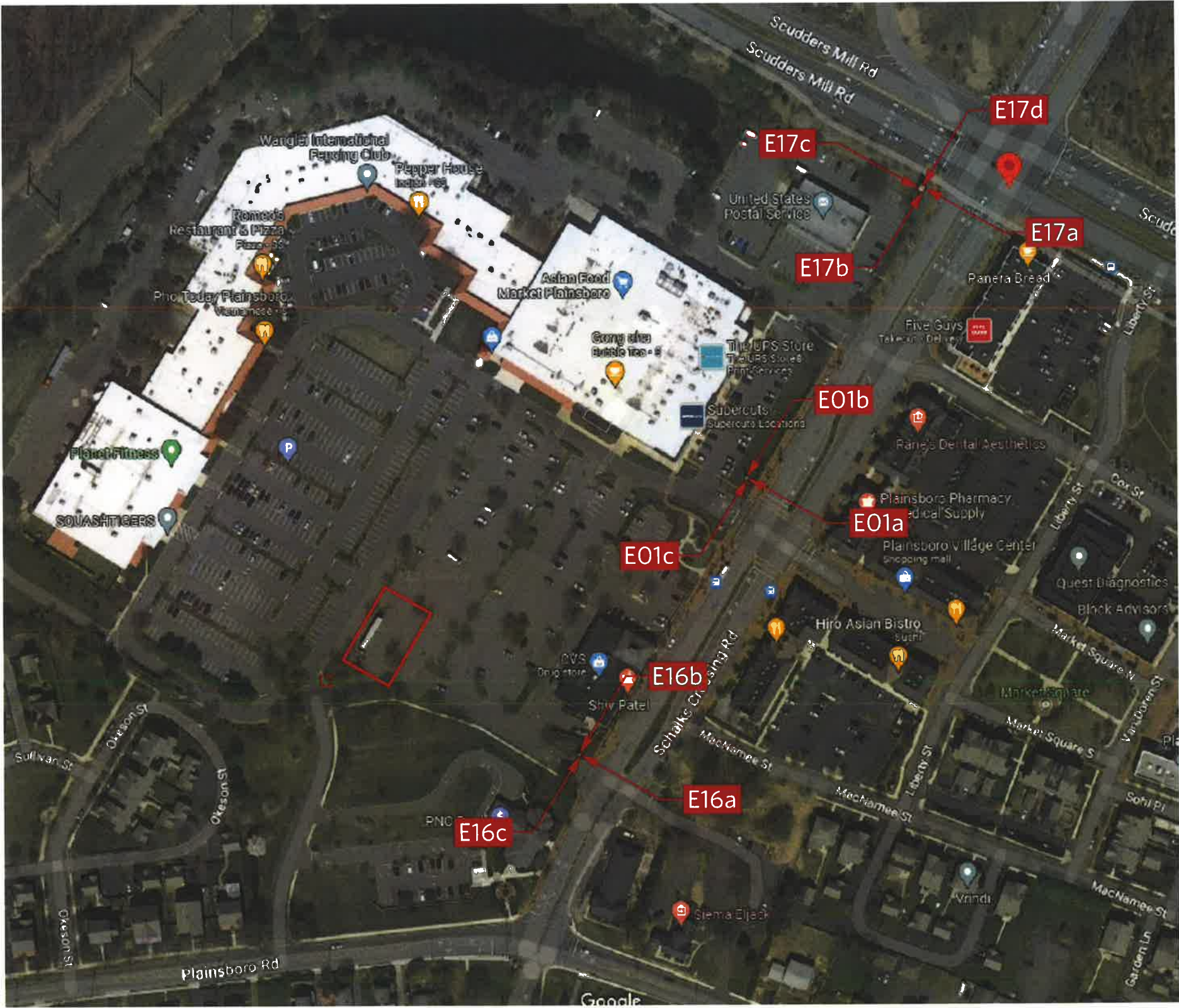
Exterior Scope of Work

E01a MT-A-P	ALUMINUM W/ PUSH THRU LETTERS	4.4SF
E01b MT-A-P	ALUMINUM W/ PUSH THRU LETTERS	4.4SF
E01c MT-A-P	ALUMINUM W/ PUSH THRU LETTERS	4.4SF
E16a MT-A-P	ALUMINUM W/ PUSH THRU LETTERS	4.4SF
E16b MT-A-P	ALUMINUM W/ PUSH THRU LETTERS	4.4SF
E16c MT-A-P	ALUMINUM W/ PUSH THRU LETTERS	4.4SF
E17a REFACE	PANEL REFACE	TBD
E17b REFACE	PANEL REFACE	TBD
E17c REFACE	PANEL REFACE	TBD
E17d REFACE	PANEL REFACE	TBD

NOTE: ALL SIGNS TO BE REVIEWED/APPROVED DURING SITE PLAN APPROVAL



■ Exterior Signs  
■ Interior Signs



CHS.NB.1284 - Plainsboro  
Schalks Crossing Rd & Scudders Mill Rd  
Plainsboro, NJ 08536

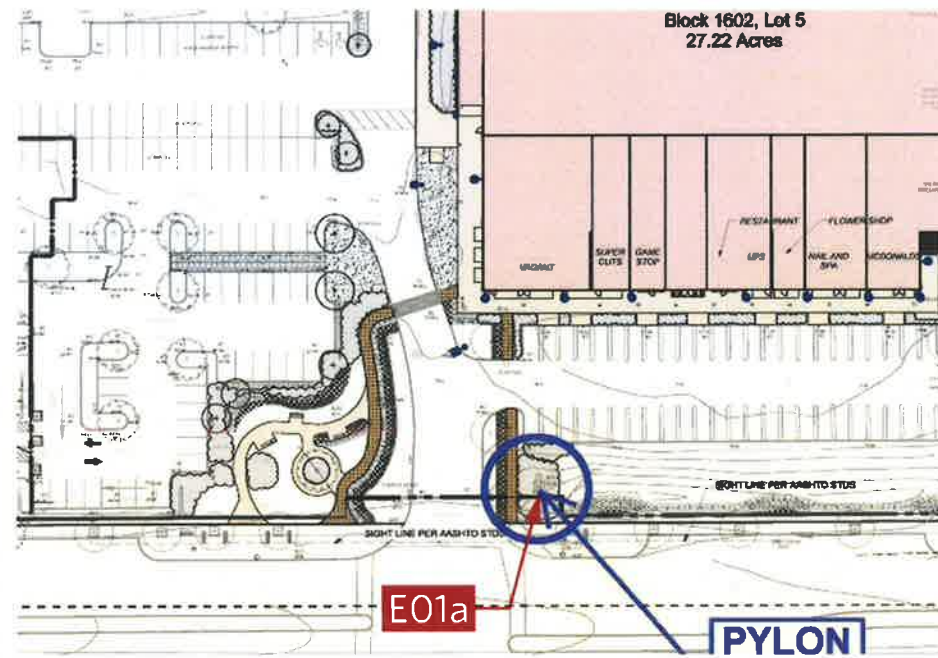
DESIGNER - FP  
CREATED - 02.23.23  
DRAWING - B104562

 **PHILADELPHIASIGN**  
BRINGING THE WORLD'S BRANDS TO LIFE  
707 WEST SPRING GARDEN ST • PALMYRA, NJ • 08065  
P: 856-829-1460 • F: 856-829-8549 • WEB: <http://www.philadelphiasign.com>

THIS IS AN ORIGINAL UNPUBLISHED DRAWING CREATED BY P.S.C.O. IT IS SUBMITTED FOR YOUR PERSONAL USE IN CONJUNCTION WITH A PROJECT BEING PLANNED FOR YOU BY P.S.C.O. IT IS NOT TO BE SHOWN TO ANYONE OUTSIDE YOUR ORGANIZATION NOR IS IT TO BE USED, COPIED, REPRODUCED, OR EXHIBITED IN ANY FASHION.



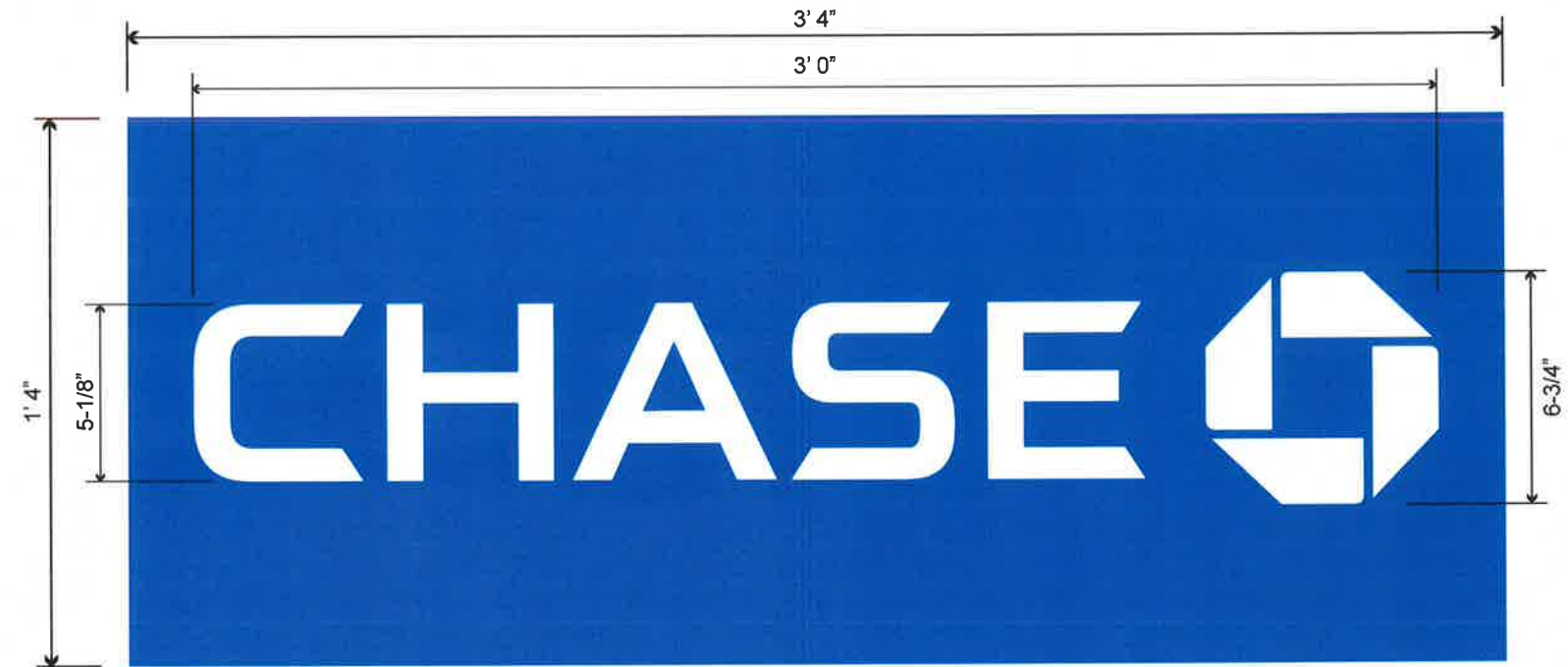
# E01a - MT-A-P



Close-Up View



Rendering



**MT-A-P**  
**ALUMINUM W/ PUSH THRU LETTERS**  
SCALE: NTS



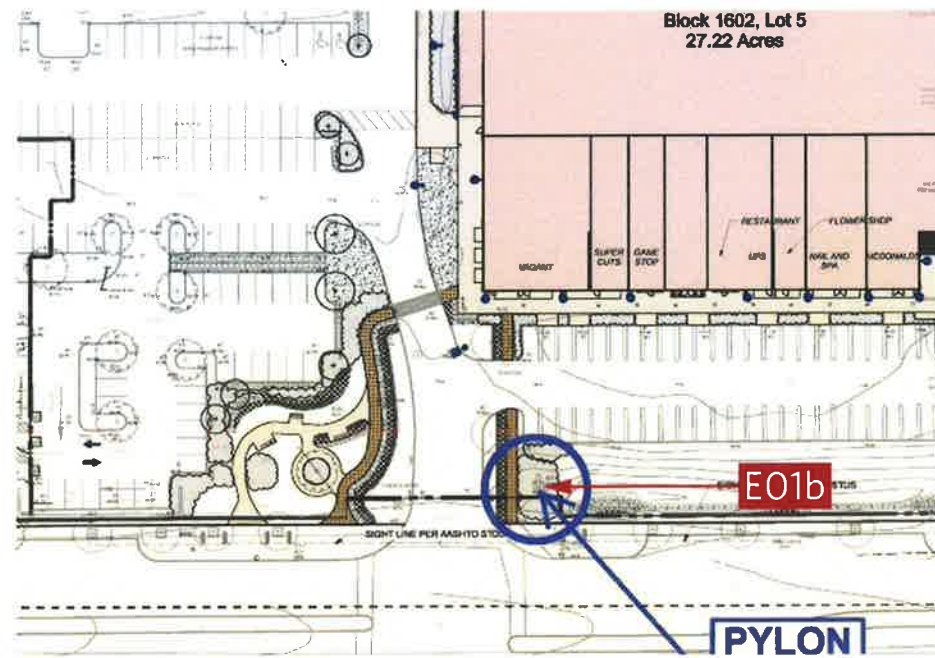
**CHS.NB.1284 - Plainsboro**  
Schalks Crossing Rd & Scudders Mill Rd  
Plainsboro, NJ 08536

**DESIGNER** - FP  
**CREATED** - 02.23.23  
**DRAWING** - B104562

**PHILADELPHIASIGN**  
BRINGING THE WORLD'S BRANDS TO LIFE  
707 WEST SPRING GARDEN ST • PALMYRA, NJ • 08065  
P: 856-829-1460 • F: 856-829-8549 • WEB: <http://www.philadelphiasign.com>

THIS IS AN ORIGINAL UNPUBLISHED DRAWING CREATED BY P.S.C.O. IT IS SUBMITTED FOR YOUR PERSONAL USE IN CONJUNCTION WITH A PROJECT BEING PLANNED FOR YOU BY P.S.C.O. IT IS NOT TO BE SHOWN TO ANYONE OUTSIDE YOUR ORGANIZATION NOR IS IT TO BE USED, COPIED, REPRODUCED, OR EXHIBITED IN ANY FASHION.

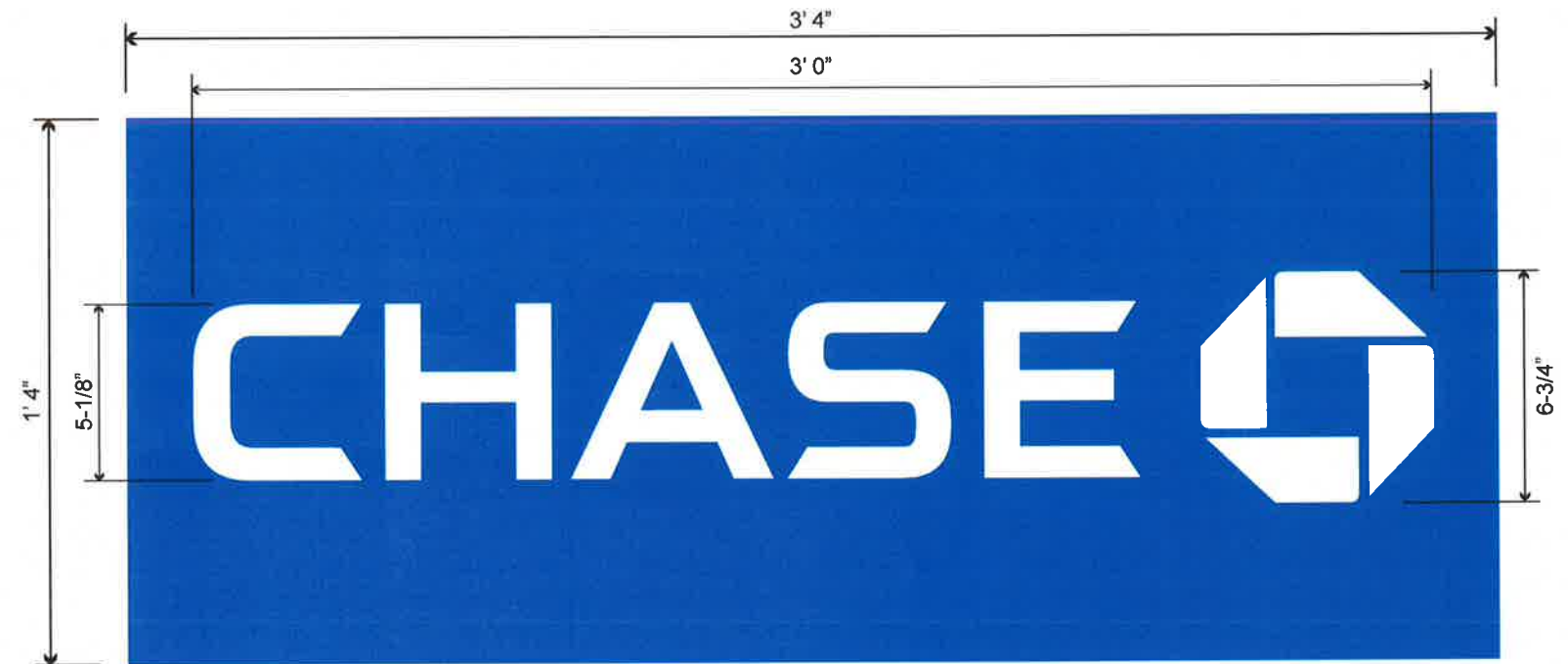
# E01b - MT-A-P



Close-Up View



Rendering



**MT-A-P**  
**ALUMINUM W/ PUSH THRU LETTERS**  
 SCALE: NTS



**CHS.NB.1284 - Plainsboro**  
 Schalks Crossing Rd & Scudders Mill Rd  
 Plainsboro, NJ 08536

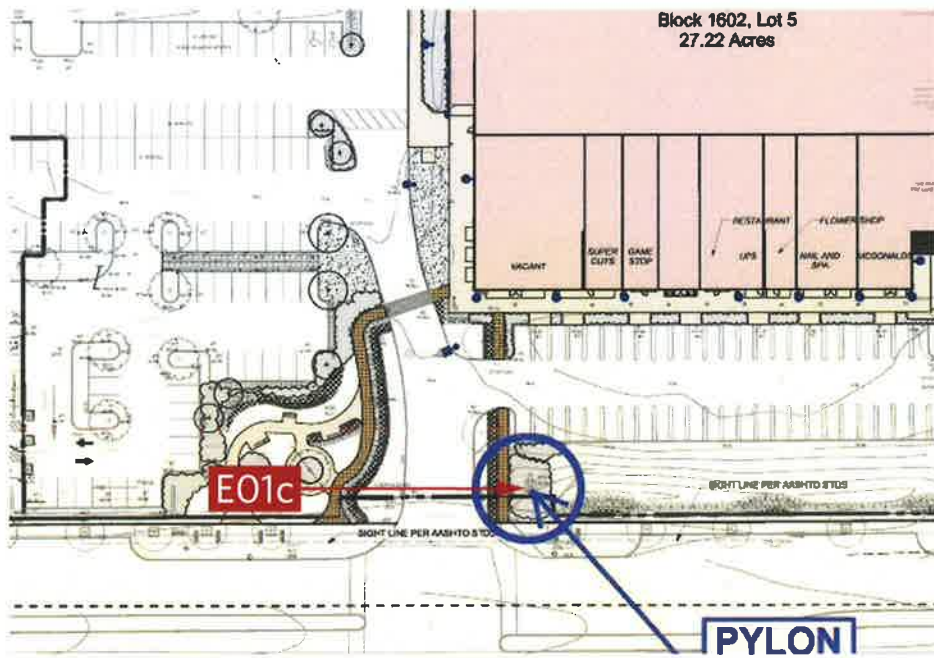
**DESIGNER** - FP  
**CREATED** - 02.23.23  
**DRAWING** - B104562

**PHILADELPHIASIGN**  
 BRINGING THE WORLD'S BRANDS TO LIFE  
 707 WEST SPRING GARDEN ST • PALMYRA, NJ • 08065  
 P: 856-829-1460 • F: 856-829-8549 • WEB: <http://www.philadelphiasign.com>

THIS IS AN ORIGINAL UNPUBLISHED DRAWING CREATED BY P.S.C.O. IT IS SUBMITTED FOR YOUR PERSONAL USE IN CONJUNCTION WITH A PROJECT BEING PLANNED FOR YOU BY P.S.C.O. IT IS NOT TO BE SHOWN TO ANYONE OUTSIDE YOUR ORGANIZATION NOR IS IT TO BE USED, COPIED, REPRODUCED, OR EXHIBITED IN ANY FASHION.



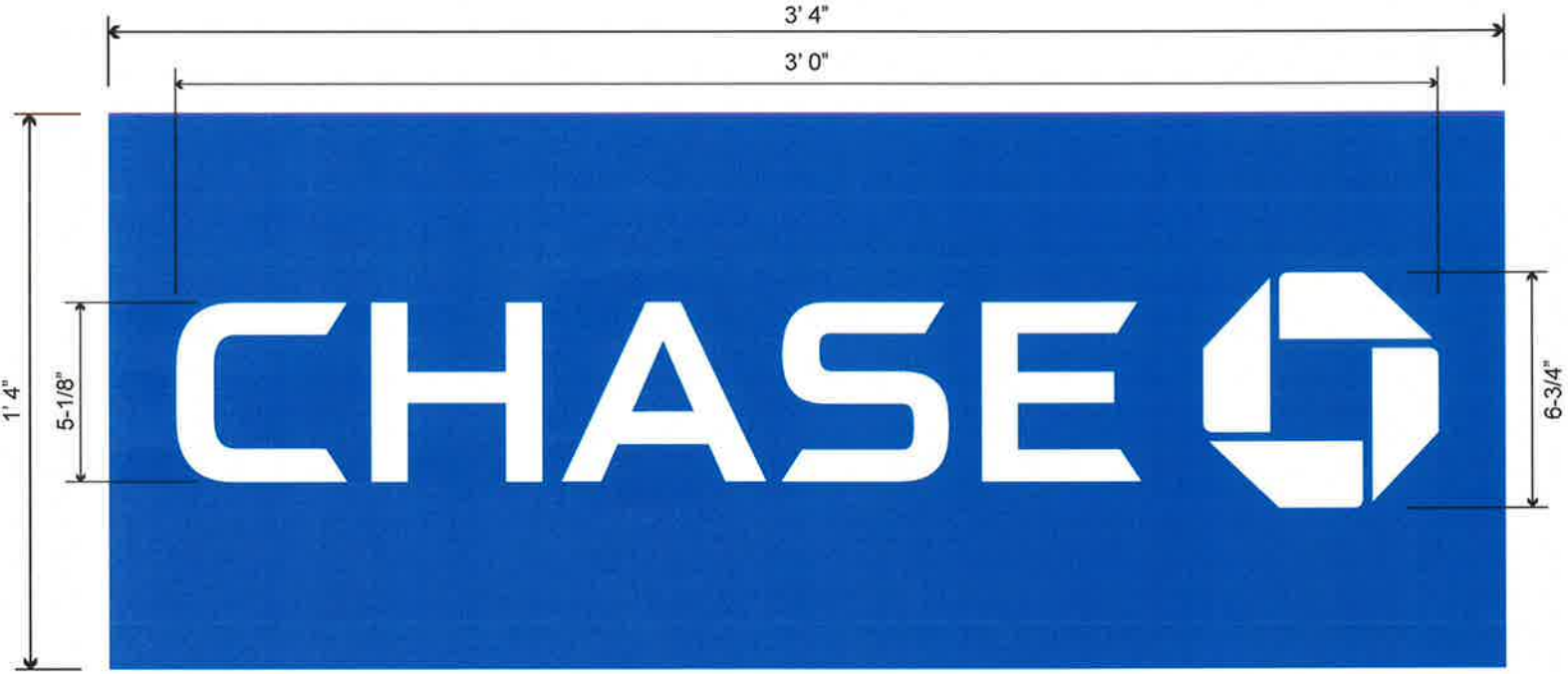
E01c - MT-A-P



Close-Up View



Rendering



MT-A-P  
ALUMINUM w/ PUSH THRU LETTERS  
SCALE: NTS



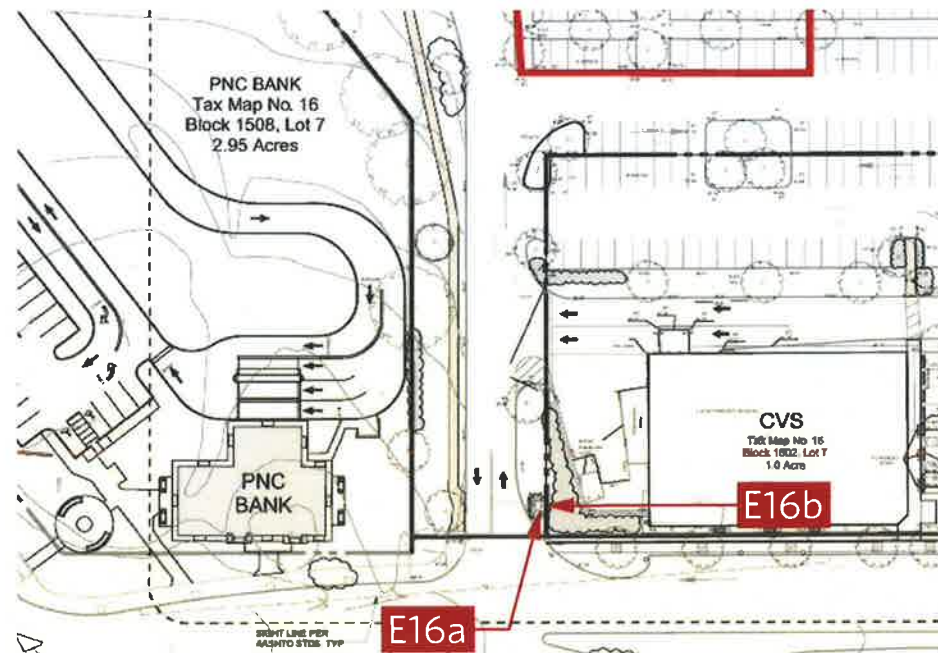
CHS.NB.1284 - Plainsboro  
Schalks Crossing Rd & Scudders Mill Rd  
Plainsboro, NJ 08536

DESIGNER - FP  
CREATED - 02.23.23  
DRAWING - B104562

 PHILADELPHIASIGN  
BRINGING THE WORLD'S BRANDS TO LIFE  
707 WEST SPRING GARDEN ST • PALMYRA, NJ • 08065  
P: 856-829-1460 • F: 856-829-8549 • WEB: <http://www.philadelphiasign.com>

THIS IS AN ORIGINAL UNPUBLISHED DRAWING CREATED BY P.S.C.O. IT IS SUBMITTED FOR YOUR PERSONAL USE IN CONJUNCTION WITH A PROJECT BEING PLANNED FOR YOU BY P.S.C.O. IT IS NOT TO BE SHOWN TO ANYONE OUTSIDE YOUR ORGANIZATION NOR IS IT TO BE USED, COPIED, REPRODUCED, OR EXHIBITED IN ANY FASHION.

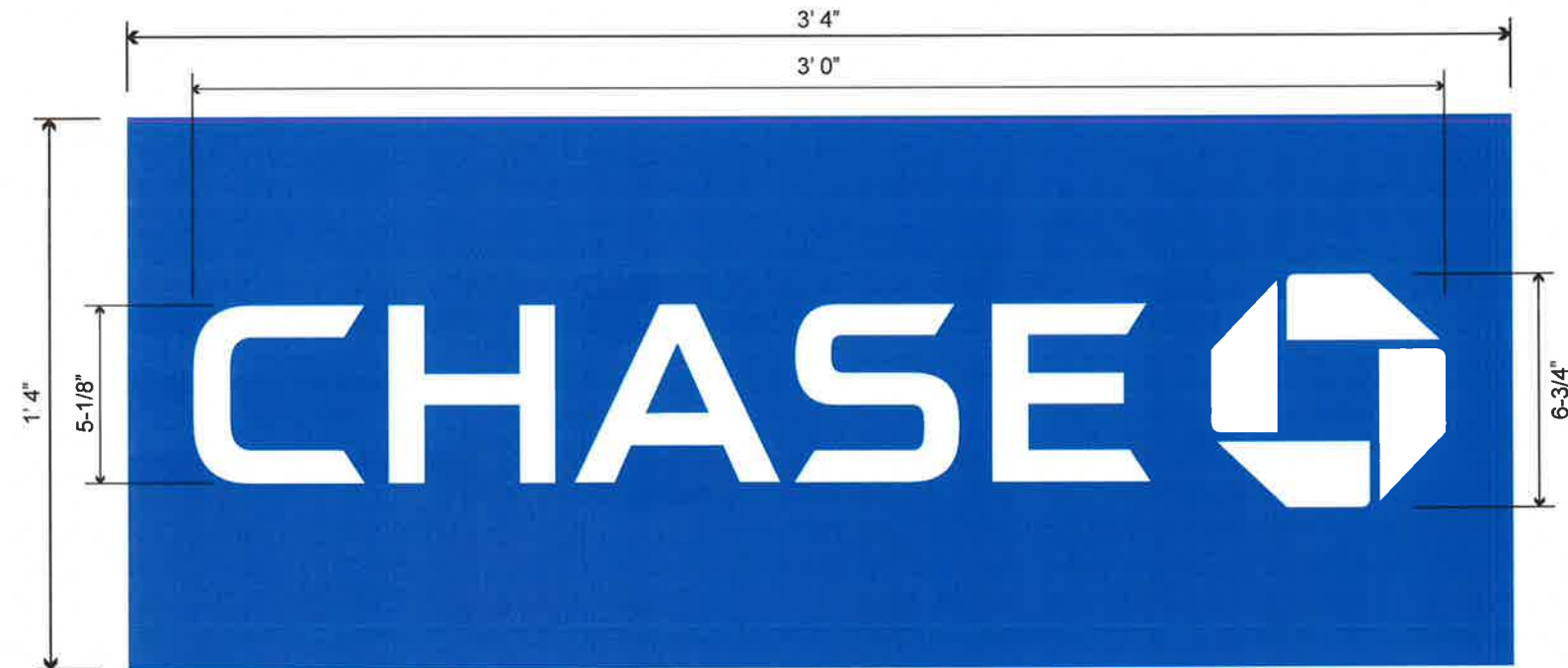
# E16a, E16b - MT-A-P



Close-Up View



Rendering



**MT-A-P**  
**ALUMINUM w/ PUSH THRU LETTERS**  
SCALE: NTS



**CHS.NB.1284 - Plainsboro**  
Schalks Crossing Rd & Scudders Mill Rd  
Plainsboro, NJ 08536

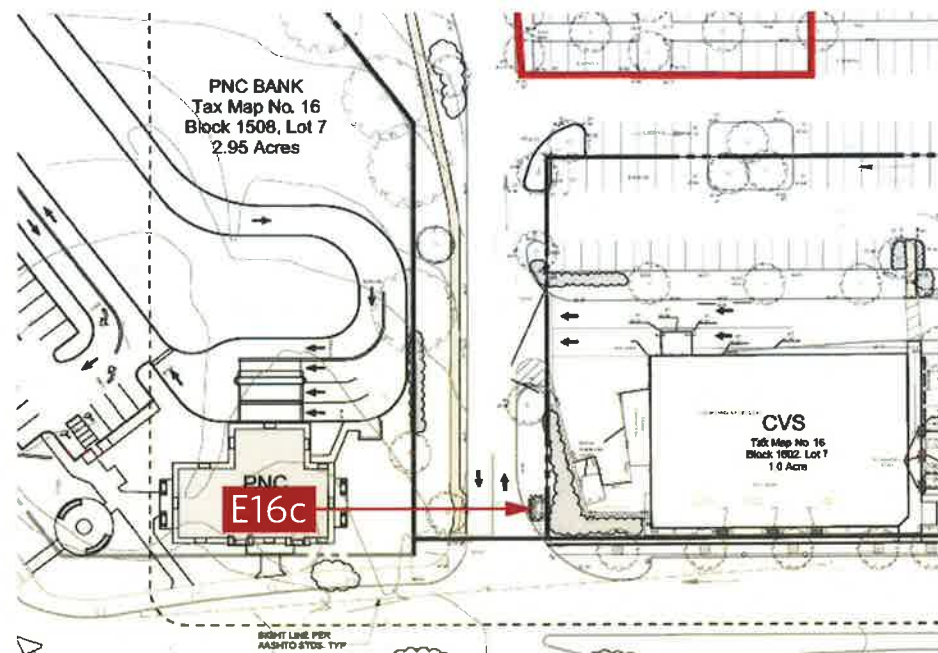
**DESIGNER** - FP  
**CREATED** - 02.23.23  
**DRAWING** - B104562

**PHILADELPHIASIGN**  
BRINGING THE WORLD'S BRANDS TO LIFE  
707 WEST SPRING GARDEN ST. • PALMYRA, NJ • 08065  
P: 856-829-1460 • F: 856-829-8549 • WEB: <http://www.philadelphiasign.com>

THIS IS AN ORIGINAL UNPUBLISHED DRAWING CREATED BY P.S.C.O. IT IS SUBMITTED FOR YOUR PERSONAL USE IN CONJUNCTION WITH A PROJECT BEING PLANNED FOR YOU BY P.S.C.O. IT IS NOT TO BE SHOWN TO ANYONE OUTSIDE YOUR ORGANIZATION NOR IS IT TO BE USED, COPIED, REPRODUCED, OR EXHIBITED IN ANY FASHION.



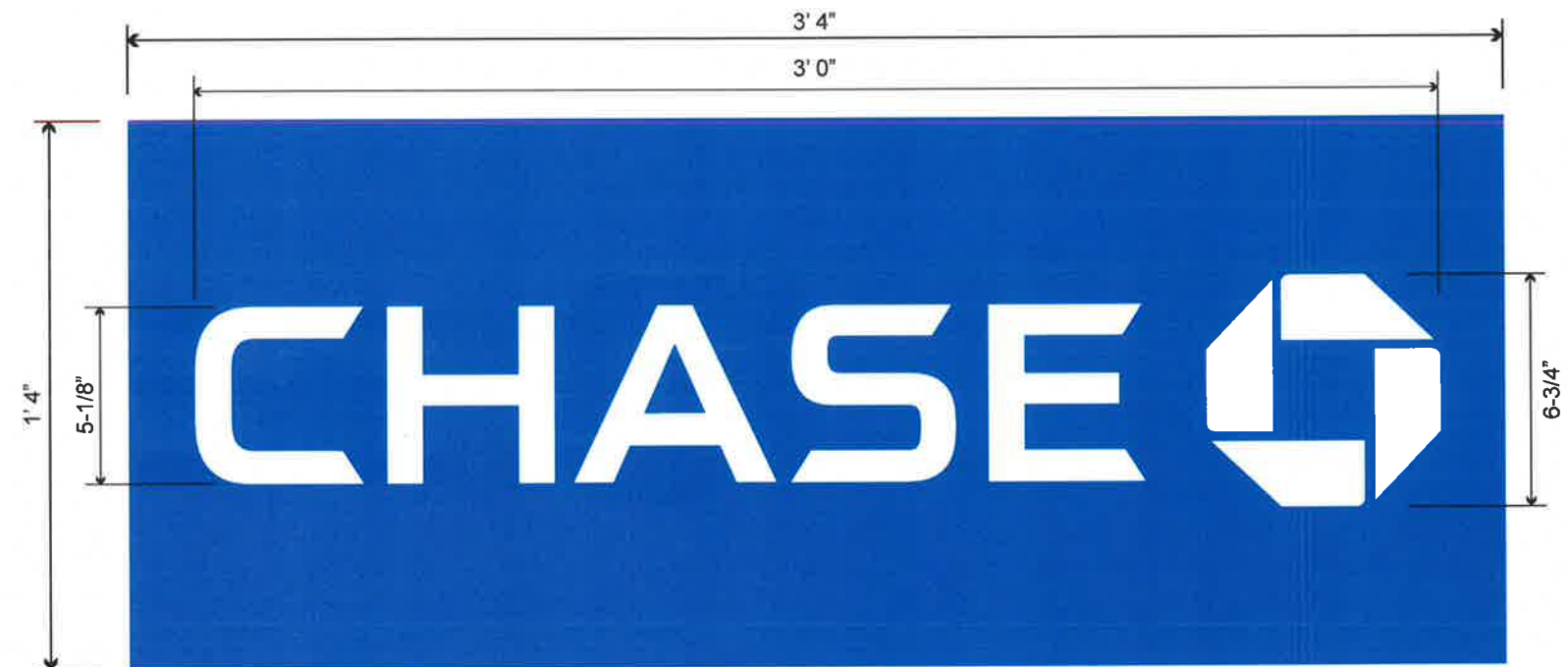
# E16c - MT-A-P



Close-Up View



Rendering



**MT-A-P**  
**ALUMINUM W/ PUSH THRU LETTERS**  
SCALE: NTS



**CHS.NB.1284 - Plainsboro**  
Schalks Crossing Rd & Scudders Mill Rd  
Plainsboro, NJ 08536

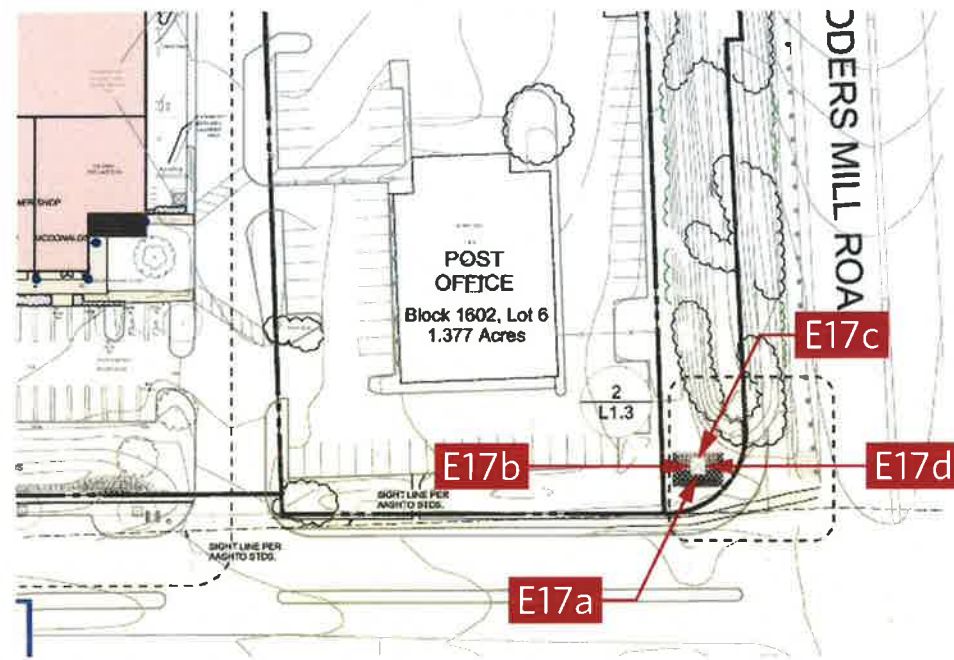
**DESIGNER** - FP  
**CREATED** - 02.23.23  
**DRAWING** - B104562

**PHILADELPHIASIGN**  
BRINGING THE WORLD'S BRANDS TO LIFE  
707 WEST SPRING GARDEN ST • PALMYRA, NJ • 08065  
P: 856-829-1460 • F: 856-829-8549 • WEB: <http://www.philadelphiasign.com>

THIS IS AN ORIGINAL UNPUBLISHED DRAWING CREATED BY P.S.C.O. IT IS SUBMITTED FOR YOUR PERSONAL USE IN CONJUNCTION WITH A PROJECT BEING PLANNED FOR YOU BY P.S.C.O. IT IS NOT TO BE SHOWN TO ANYONE OUTSIDE YOUR ORGANIZATION NOR IS IT TO BE USED, COPIED, REPRODUCED, OR EXHIBITED IN ANY FASHION.



## E17a, E17b, E17c, E17d - REFACE



Close-Up View



Existing

**Future Face Replacement.  
Exact Location To Be Determined  
Pending Availability.**

**CHASE**

**CHS.NB.1284 - Plainsboro**

Schalks Crossing Rd & Scudders Mill Rd  
Plainsboro, NJ 08536

**DESIGNER - FP**

**CREATED - 02.23.23**

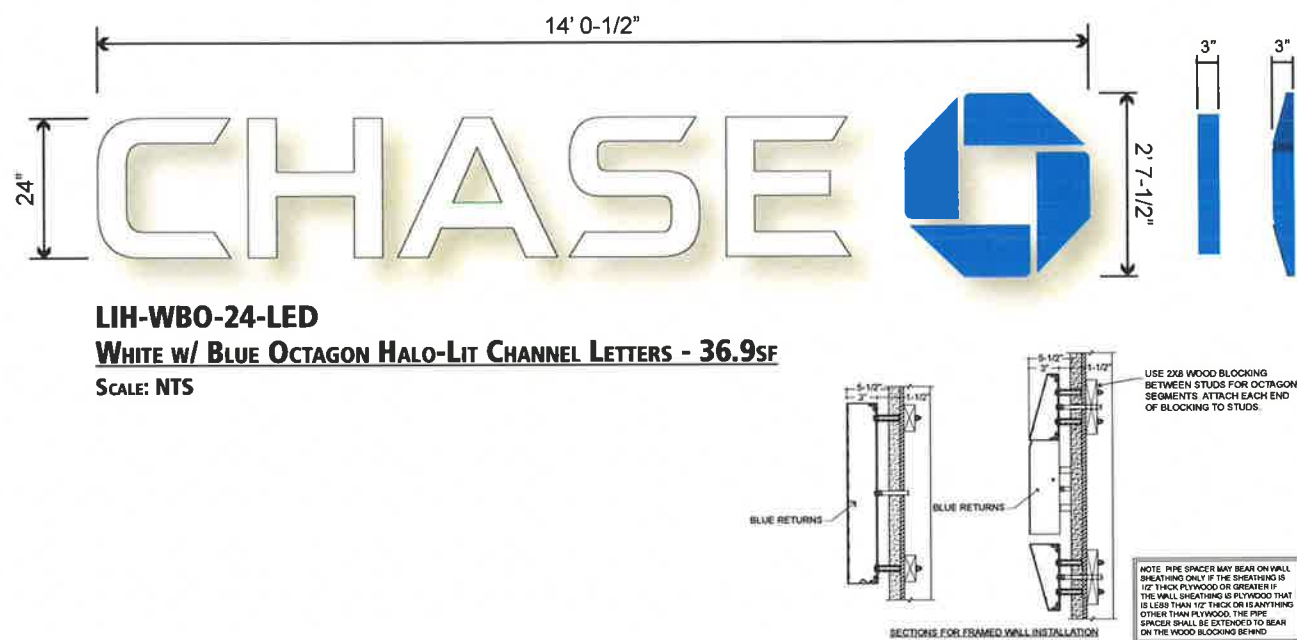
**DRAWING - B104562**

**PHILADELPHIASIGN**  
BRINGING THE WORLD'S BRANDS TO LIFE

707 WEST SPRING GARDEN ST • PALMYRA, NJ • 08065  
P: 856-829-1460 • F: 856-829-8549 • WEB: <http://www.philadelphiasign.com>

THIS IS AN ORIGINAL UNPUBLISHED DRAWING CREATED BY P.S.C.O. IT IS SUBMITTED FOR YOUR PERSONAL USE IN CONJUNCTION WITH A PROJECT BEING PLANNED FOR YOU BY P.S.C.O. IT IS NOT TO BE SHOWN TO ANYONE OUTSIDE YOUR ORGANIZATION NOR IS IT TO BE USED, COPIED, REPRODUCED, OR EXHIBITED IN ANY FASHION.





For Reference Only

**CHS.PP\_RW\_24LTR**

### RACEWAY FOR 24" LETTERSET INSTALLED BEHIND THE PARAPET

**SCALE: NTS**

**ADA-EP**

### HANDICAPPED ENTRANCE PLAQUE

**SCALE: NTS**

**CUST-VIN**

**MATCHING BLUE VINYL BACKER**

**SCALE: NTS**



**SIGN E11 MOUNTS  
BACK-TO-BACK WITH  
SIGN I01.**



### CHS.NB.1284 - Plainsboro

Schalks Crossing Rd & Scudders Mill Rd  
Plainsboro, NJ 08536

DESIGNER - FP

**CREATED - 02.23.23**

**DRAWING - B104562**



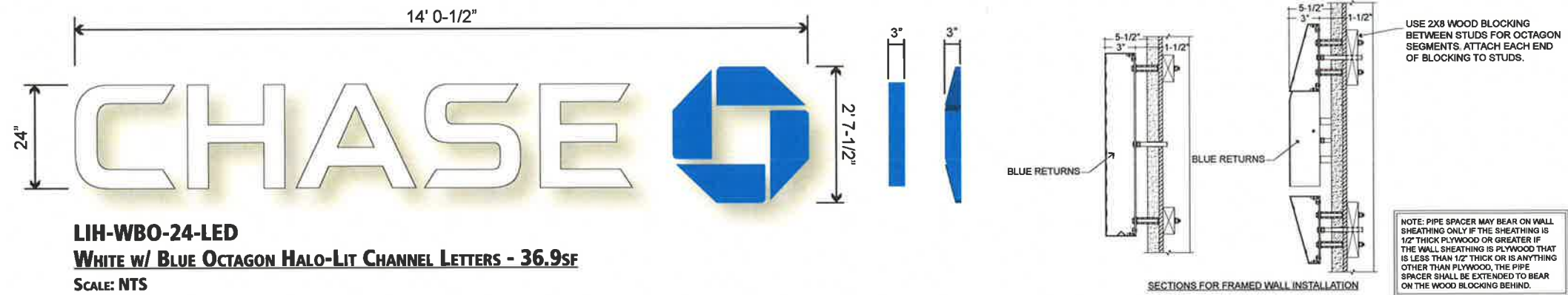
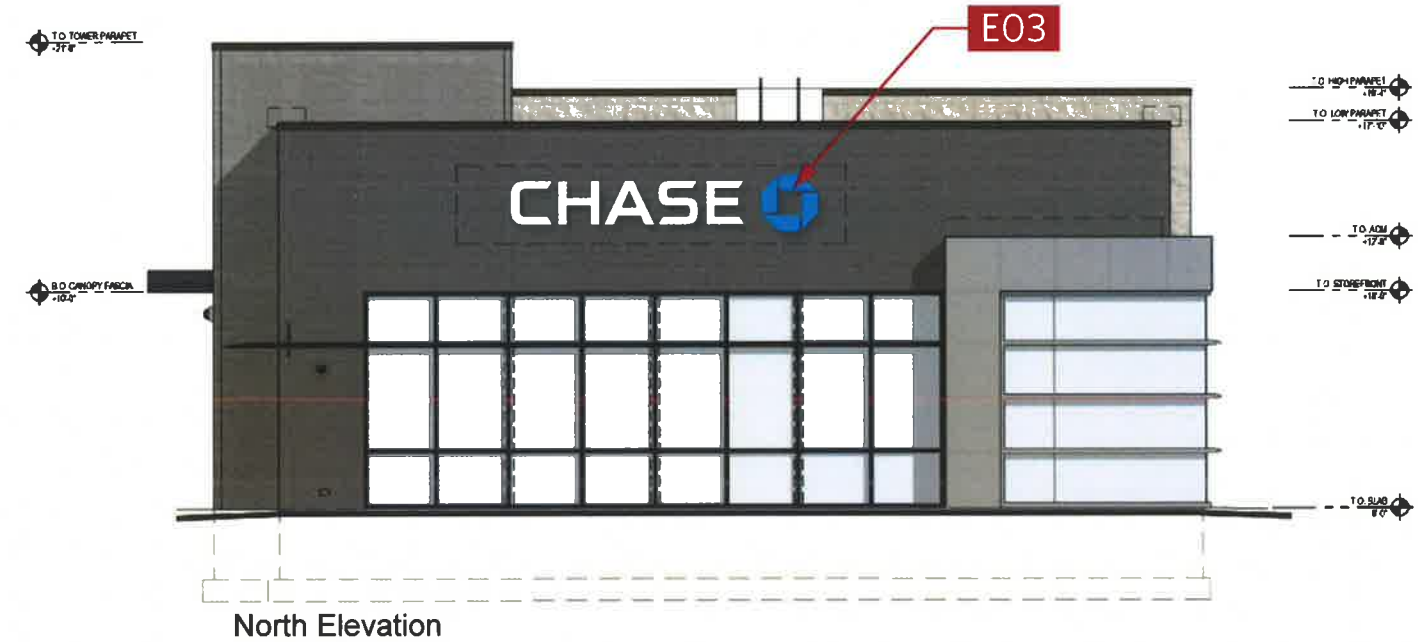
PHILADELPHIASIGN

707 WEST SPRING GARDEN ST • PALMYRA, NJ • 08065  
P: 856-829-1460 • F: 856-829-8549 • WEB: <http://www.philadelphiassign.com>

THIS IS AN ORIGINAL UNPUBLISHED DRAWING CREATED  
BY P.S.C.O. IT IS SUBMITTED FOR YOUR PERSONAL USE  
IN CONJUNCTION WITH A PROJECT BEING PLANNED  
FOR YOU BY P.S.C.O. IT IS NOT TO BE SHOWN TO ANYONE  
OUTSIDE YOUR ORGANIZATION NOR IS IT TO BE USED,  
COPIED, REPRODUCED, OR EXHIBITED IN ANY FASHION.



E03 - LIH-WBO-24-LED



CHS.NB.1284 - Plainsboro  
Schalks Crossing Rd & Scudders Mill Rd  
Plainsboro, NJ 08536

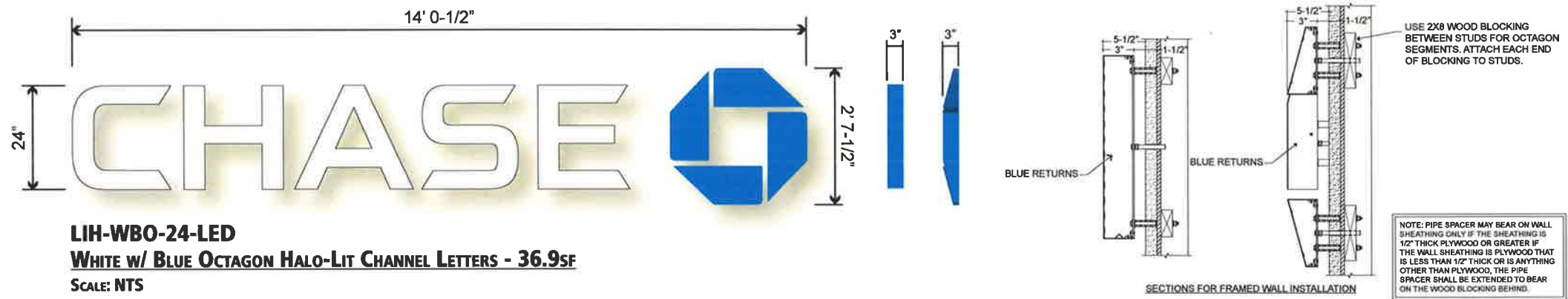
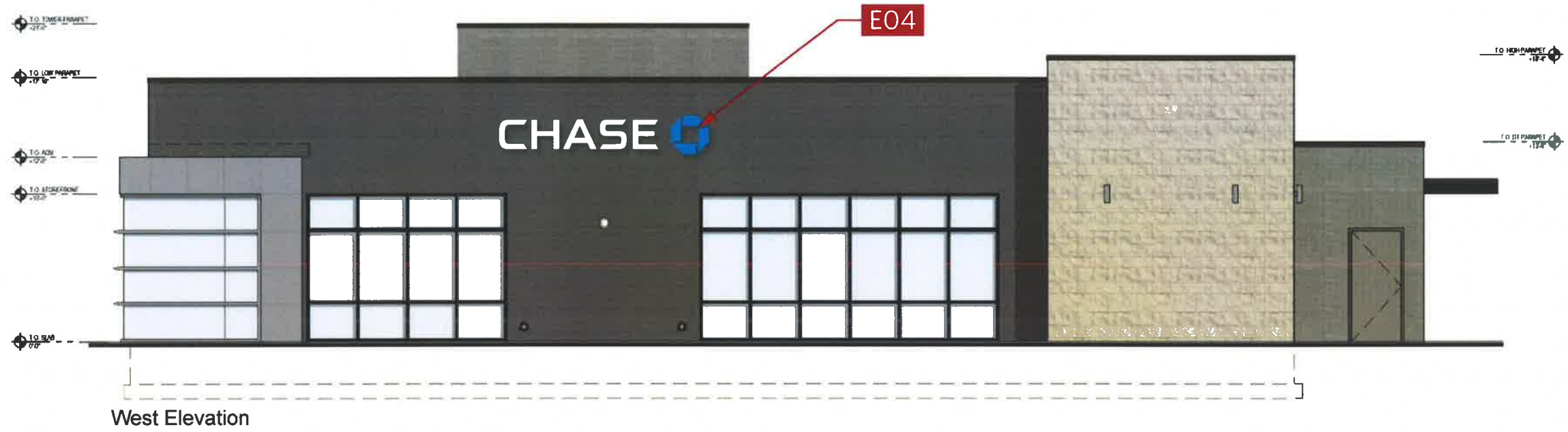
DESIGNER - FP  
CREATED - 02.23.23  
DRAWING - B104562

 **PHILADELPHIASIGN**  
BRINGING THE WORLD'S BRANDS TO LIFE  
707 WEST SPRING GARDEN ST • PALMYRA, NJ • 08065  
P: 856-829-1460 • F: 856-829-8549 • WEB: <http://www.philadelphiasign.com>

THIS IS AN ORIGINAL UNPUBLISHED DRAWING CREATED BY P.S.C.O. IT IS SUBMITTED FOR YOUR PERSONAL USE IN CONJUNCTION WITH A PROJECT BEING PLANNED FOR YOU BY P.S.C.O. IT IS NOT TO BE SHOWN TO ANYONE OUTSIDE YOUR ORGANIZATION NOR IS IT TO BE USED, COPIED, REPRODUCED, OR EXHIBITED IN ANY FASHION.



E04 - LIH-WBO-24-LED



CHS.NB.1284 - Plainsboro  
Schalks Crossing Rd & Scudders Mill Rd  
Plainsboro, NJ 08536

DESIGNER - FP  
CREATED - 02.23.23  
DRAWING - B104562

 **PHILADELPHIASIGN**  
BRINGING THE WORLD'S BRANDS TO LIFE  
707 WEST SPRING GARDEN ST • PALMYRA, NJ • 08065  
P: 856-829-1460 • F: 856-829-8549 • WEB: <http://www.philadelphiasign.com>

THIS IS AN ORIGINAL UNPUBLISHED DRAWING CREATED BY P.S.C.O. IT IS SUBMITTED FOR YOUR PERSONAL USE IN CONJUNCTION WITH A PROJECT BEING PLANNED FOR YOU BY P.S.C.O. IT IS NOT TO BE SHOWN TO ANYONE OUTSIDE YOUR ORGANIZATION NOR IS IT TO BE USED, COPIED, REPRODUCED, OR EXHIBITED IN ANY FASHION.



## E05 - SUR-TTW-U-4-TP



**SUR-TTW-U-4-TP**  
**THIN PROFILE ATM SURROUND - 33SF**  
 SCALE: NTS



**CHS.NB.1284 - Plainsboro**

Schalks Crossing Rd & Scudders Mill Rd  
 Plainsboro, NJ 08536

**DESIGNER - FP**

**CREATED - 02.23.23**

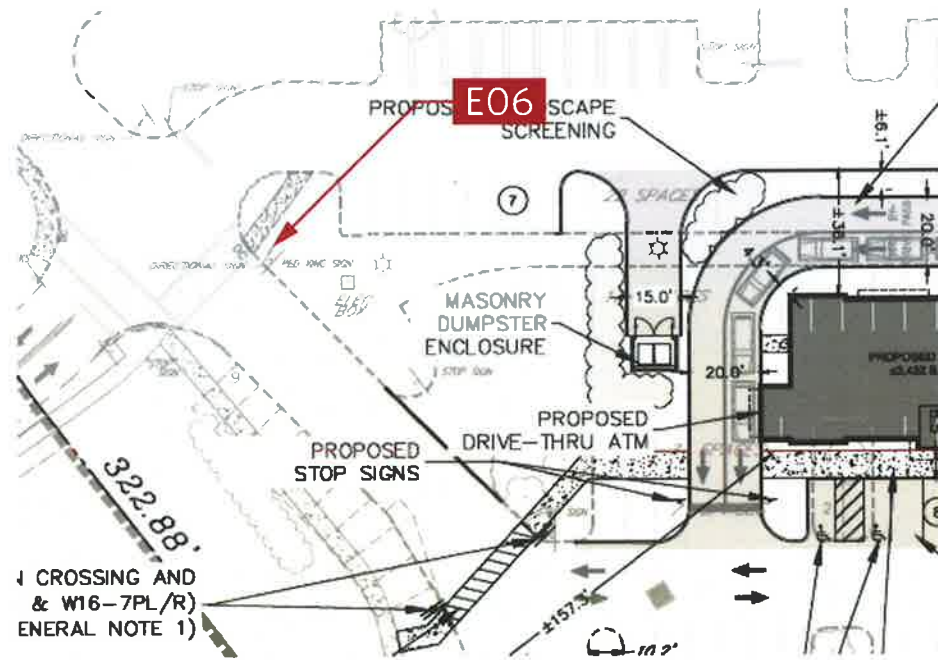
**DRAWING - B104562**



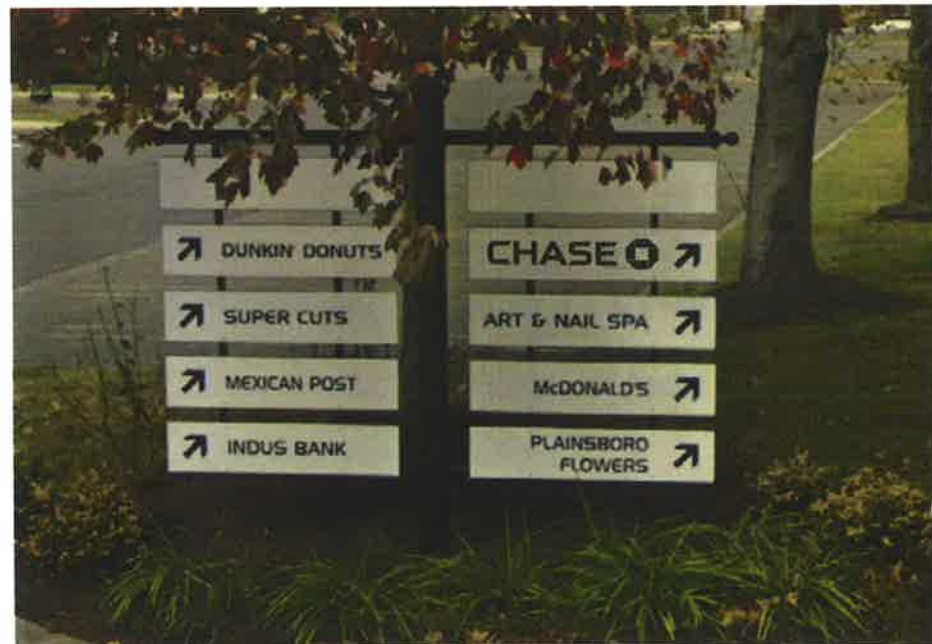
THIS IS AN ORIGINAL UNPUBLISHED DRAWING CREATED BY P.S.C.O. IT IS SUBMITTED FOR YOUR PERSONAL USE IN CONJUNCTION WITH A PROJECT BEING PLANNED FOR YOU BY P.S.C.O. IT IS NOT TO BE SHOWN TO ANYONE OUTSIDE YOUR ORGANIZATION NOR IS IT TO BE USED, COPIED, REPRODUCED, OR EXHIBITED IN ANY FASHION.



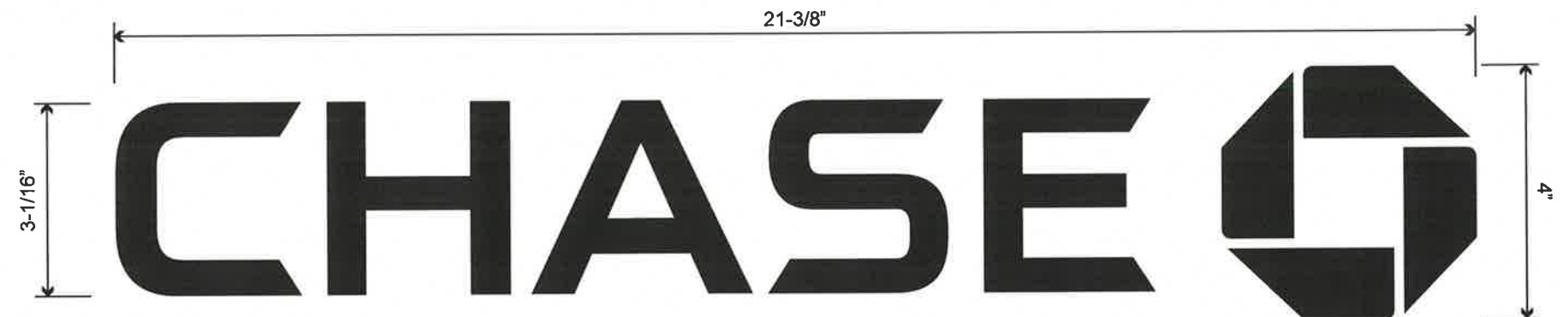
## E06 - CUST-REFACE



Close-Up View



Rendering

**CUST-REFACE****VINYL REFACE OF METAL DIRECTIONAL PANEL - 0.6SF**

SCALE: NTS

**CHASE**

**CHS.NB.1284 - Plainsboro**

Schalks Crossing Rd & Scudders Mill Rd  
Plainsboro, NJ 08536

**DESIGNER** - FP**CREATED** - 02.23.23**DRAWING** - B104562

**PHILADELPHIASIGN**  
BRINGING THE WORLD'S BRANDS TO LIFE

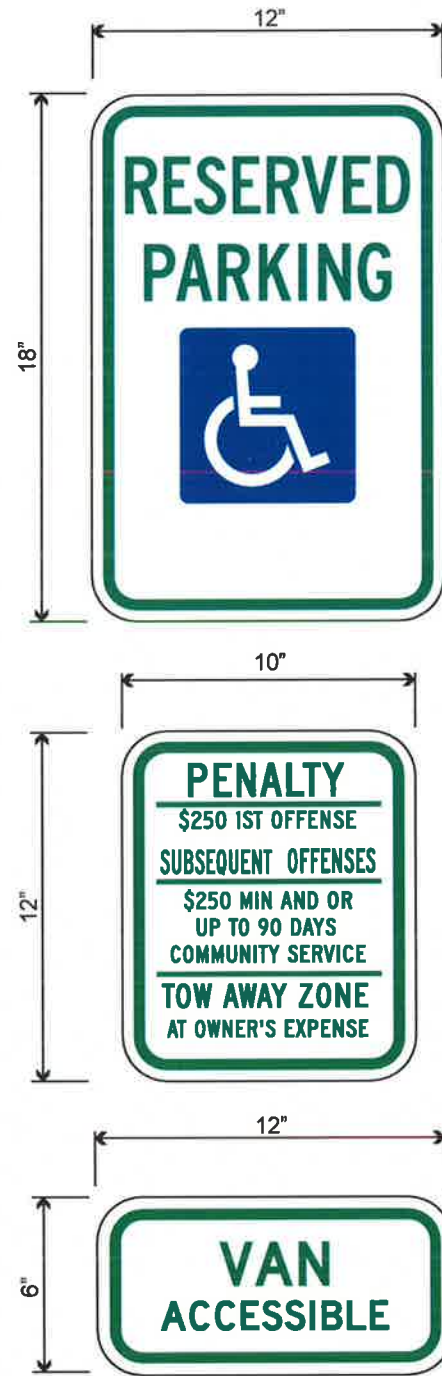
707 WEST SPRING GARDEN ST • PALMYRA, NJ • 08065  
P: 856-829-1460 • F: 856-829-8549 • WEB: <http://www.philadelphiasign.com>

THIS IS AN ORIGINAL UNPUBLISHED DRAWING CREATED BY P.S.C.O. IT IS SUBMITTED FOR YOUR PERSONAL USE IN CONJUNCTION WITH A PROJECT BEING PLANNED FOR YOU BY P.S.C.O. IT IS NOT TO BE SHOWN TO ANYONE OUTSIDE YOUR ORGANIZATION NOR IS IT TO BE USED, COPIED, REPRODUCED, OR EXHIBITED IN ANY FASHION.

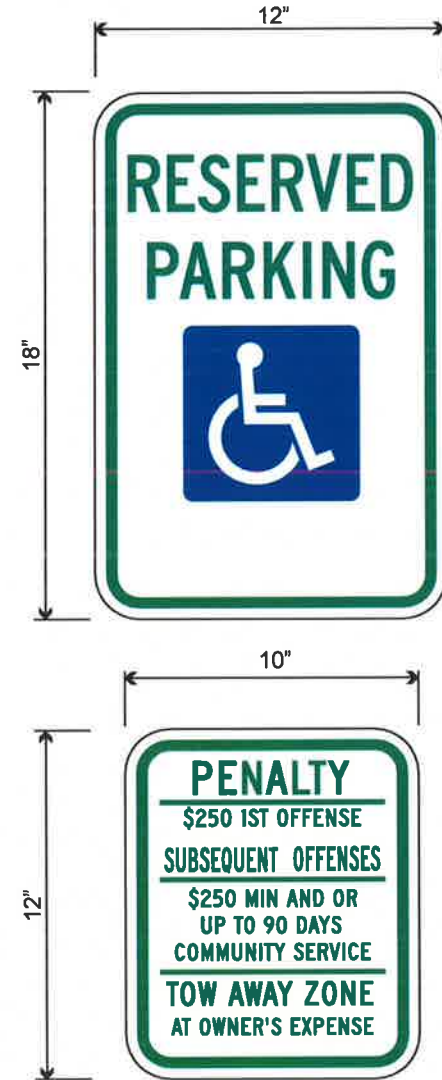


# E07 - TC-P-ADA-V-NJ-CUST

# E08 - TC-P-ADA-NJ-CUST



**TC-P-ADA-V-NJ-CUST**  
**CUSTOM POLE MOUNTED ADA PARKING REGULATORY**  
**SIGN W/ VAN ACCESS**  
 SCALE: NTS



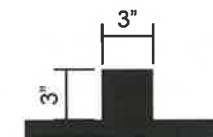
**TC-P-ADA-NJ-CUST**  
**CUSTOM POLE MOUNTED ADA PARKING REGULATORY**  
**SIGN**  
 SCALE: NTS



Aluminum panel mounted to support post (by sign installer)



Decal (by Compliance Signs)



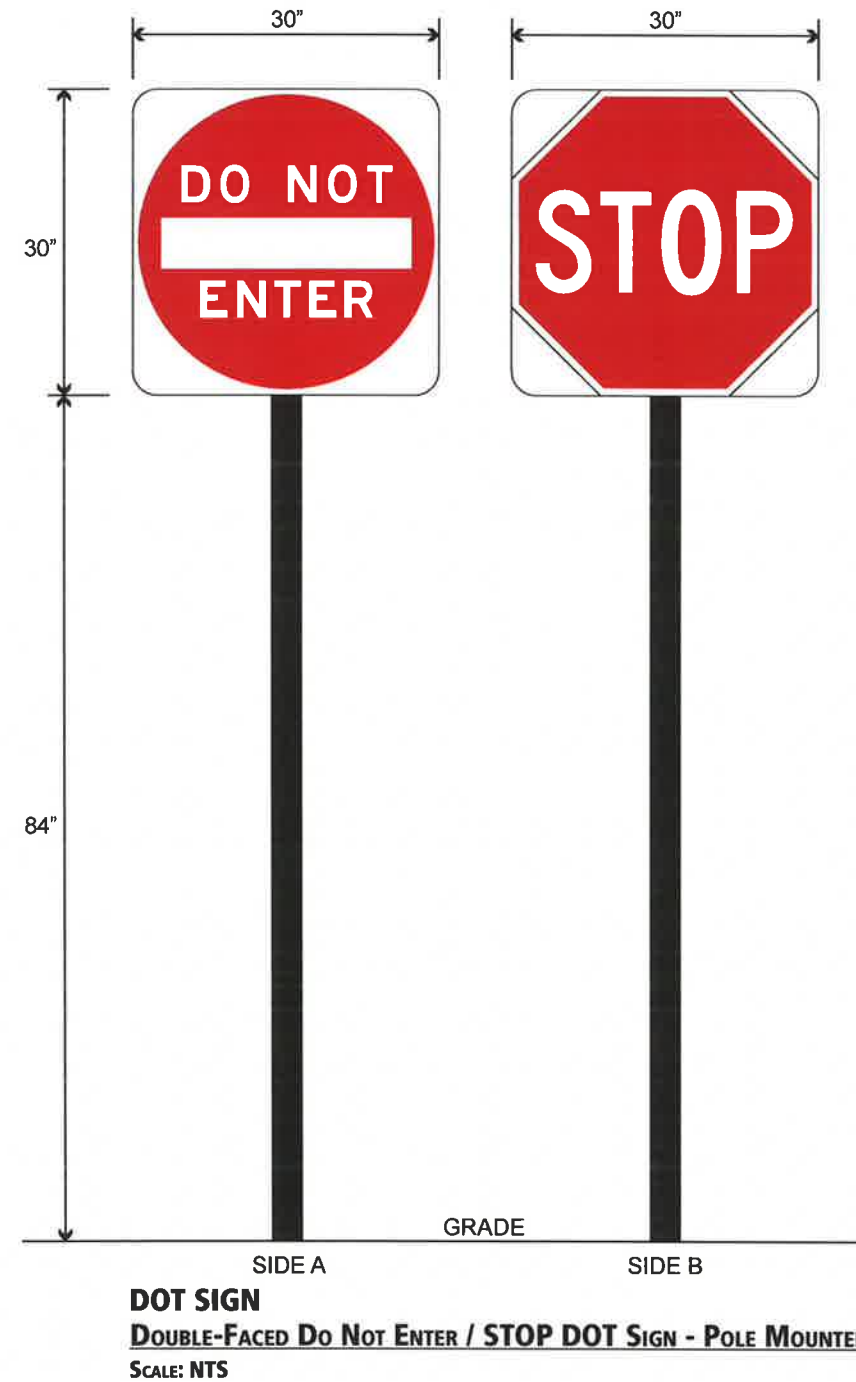
Plan View

**NOTE: Custom Pole to be 3" x 3" and Painted Black.**

\*\*Foundation shown is based on 90 mph wind speed, 150 psf/ft soil resistance.



## E09, E10 - DOT SIGN-CUST



**NOTE: Custom Pole to be  
 3" x 3" and Painted Black.**

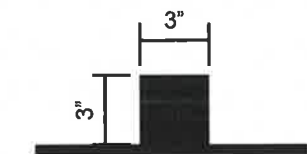


## E18, E19 - TC-P-K-CUST

## E20, E21 - TC-P-J-CUST

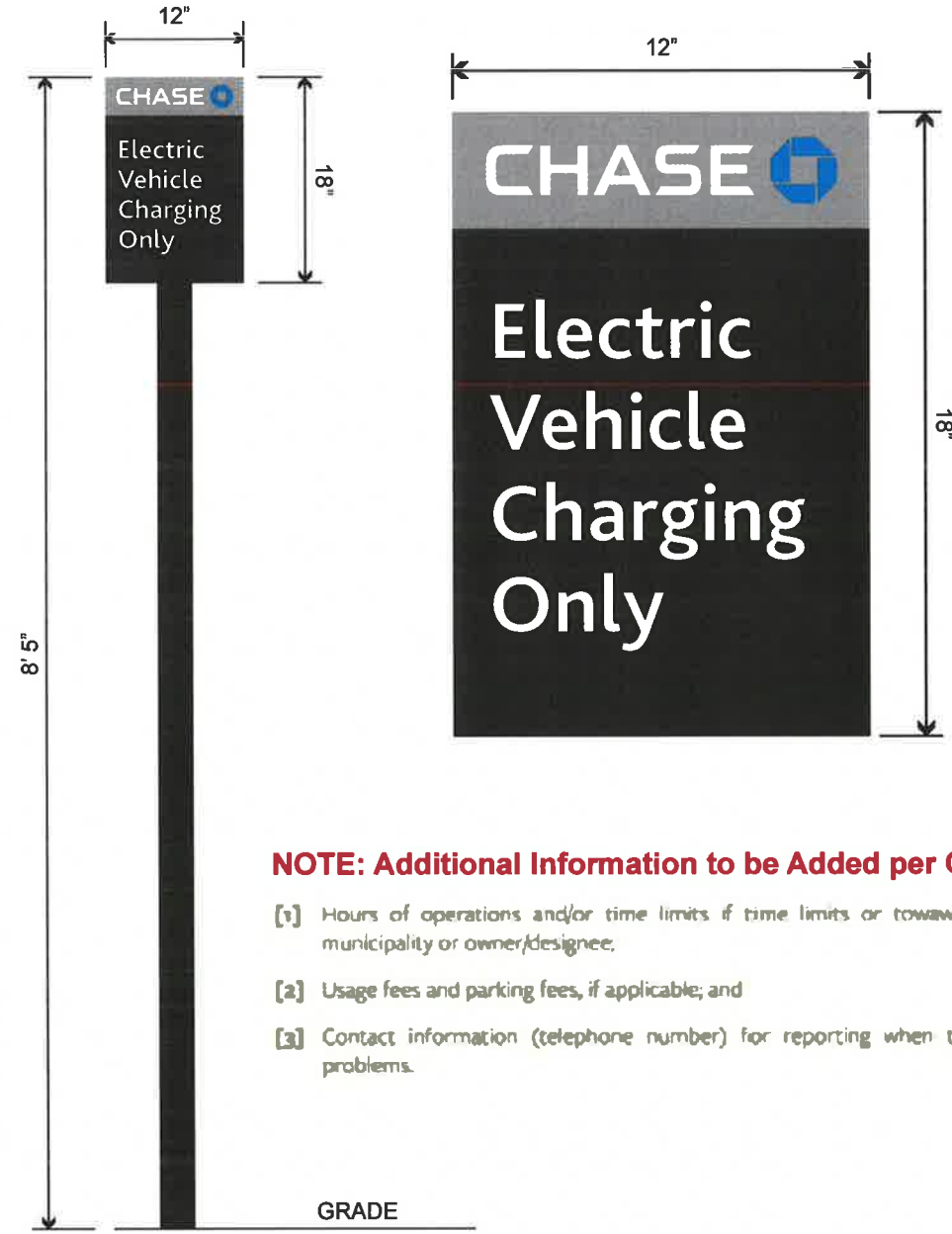


**TC-P-K-CUST**  
**CUSTOM POLE MOUNTED REGULATORY SIGN - 1.5SF**  
 SCALE: NTS



Plan View of E18 thru E21

**NOTE: Custom Pole to be  
 3" x 3" and Painted Black.**



**TC-P-J-CUST**  
**CUSTOM POLE MOUNTED REGULATORY SIGN - 1.5SF**  
 SCALE: NTS

**NOTE: Additional Information to be Added per Code Once Information is Verified.**

- [1] Hours of operations and/or time limits if time limits or towaway provisions are to be enforced by the municipality or owner/designee.
- [2] Usage fees and parking fees, if applicable; and
- [3] Contact information (telephone number) for reporting when the equipment is not operating or other problems.



**CHS.NB.1284 - Plainsboro**  
 Schalks Crossing Rd & Scudders Mill Rd  
 Plainsboro, NJ 08536

**DESIGNER - FP**

**CREATED - 02.23.23**

**DRAWING - B104562**



THIS IS AN ORIGINAL UNPUBLISHED DRAWING CREATED BY P.S.C.O. IT IS SUBMITTED FOR YOUR PERSONAL USE IN CONJUNCTION WITH A PROJECT BEING PLANNED FOR YOU BY P.S.C.O. IT IS NOT TO BE SHOWN TO ANYONE OUTSIDE YOUR ORGANIZATION NOR IS IT TO BE USED, COPIED, REPRODUCED, OR EXHIBITED IN ANY FASHION.